



Congratulations JAYCEES

NATIONAL JAYCEE WEEK ★ JANUARY 16 TO 22

WEATHER

	Min.	Max.	Precip.
Wednesday, Jan. 12	24	42	0.90
Thursday, Jan. 13	14	43	2.85
Friday, Jan. 14	14	24	0.01
Saturday, Jan. 15	3	24	Trace
Sunday, Jan. 16	3	12	0.00
Monday, Jan. 17	11	31	0.00
Tuesday, Jan. 18	18	45	Trace

ONE HUNDRED-SECOND YEAR—No. 31

14 Pages This Week

CHELSEA, MICHIGAN, THURSDAY, JANUARY 20, 1972

15c per copy

SUBSCRIPTION: \$4.00 PER YEAR

The Chelsea Standard

QUOTE

"Be a Columbus to whole new continents and worlds within you, opening new channels, not of trade, but of thought."

—Henry David Thoreau.

Cagers Drop Close Contest To South Lyon

The Chelsea basketball team returned from their trip to South Lyon Friday night a game behind in the league title race after the Lions handed the cagers a 63-59 defeat.

Both teams started slowly with South Lyon holding a 15-10 lead at the end of the first quarter. Chelsea found the going tough as they could not seem to find any consistent offense, while South Lyon began putting things together. Wayne Welton scored six of the 40 bulldog first quarter points.

The second quarter went somewhat better, but Chelsea still lacked the offensive push to get them rolling. In the quarter, Jeff Daniels, Jeff Schmidt and Welton each scored four points, but the Lions held a 29-25 lead at half-time.

The third quarter was a repeat of the first two as South Lyon performed well offensively and defensively while the Bulldogs struggled to get a scoring drive moving.

Chelsea began to roll in the fourth quarter as Welton sparked the Bulldogs with 11 of his total 23 points. The Bulldogs fought back from a 47-38 deficit to tie it up at 59-59 with a minute left to play. Jeff Schmidt fouled out and the Lions cashed in on a goal and two free throws to record their third win of the season.

Welton led the Chelsea squad in scoring with 23, followed by Schmidt with 10. Ed Seegars, Mike Muir and Jim McIntosh led South Lyon with 25, 14 and 12 points, respectively. The Lions out-rebounded the Bulldogs, 41-31.

The Bulldogs are now preparing to meet Milan Friday and Dexter Saturday with hopes of gaining ground on league leaders, Saline and Ypsilanti Lincoln.

Free Skating Times Listed for New Ice Rink

Chelsea Recreation Council announces the following free skating times at the ice rink located at the fairgrounds:

Wednesday—4 to 8 p.m. (closing).

Friday—4 to 10 p.m. (closing).

Saturday—2 to 10 p.m. (closing).

Sunday—2 to 10 p.m. (closing).

Volunteers are needed to help supervise these sessions. Anyone wishing to help may contact Owen Loasby, Gateway Sports Centre, 475-8876. Parents are encouraged to skate with their children.

Varsity Debate Team Wins District Meet

Chelsea High school varsity debaters brought home a district tournament championship Saturday, winning all six of their scheduled debates. This was the first district championship for Chelsea varsity debaters since 1967.

Debating the issue, "Should the U.S. Jury System be Significantly Changed?" were affirmative, Carl Fairbrother and Mike Heibert, and negative, Ching Lane and Dan Gaunt. The championship entitled the team to debate in the regional competition where they will meet other district champions.

Winning individual honors in his district was Miye Hergert. He was the debater chosen to compete in Detroit for college scholarships. Winners are chosen on the basis of analysis, reasoning, organization of material, delivery, refutation and evidence.

A championship in regional competition will enable the debaters to enter state finals debates.

School Board Briefs

Present at the Jan. 17 meeting of the Chelsea Board of Education were trustees Schafer, Irwin, Haselschwardt, Koenn, Smith, President Storey, Superintendent Cameron and one guest, James Hoffmeyer.

Secretary Smith reported for the public affairs committee. The board newsletter is being printed now by the graphic arts department. It is to be mailed at the end of the month.

Trustee Schafer presented a report of the planning committee. The overcrowding of the elementary schools was discussed. He also requested information concerning the student clubs and student funds.

Motion by Schafer, supported by Koenn, to go into executive session at 10:15 p.m., was unanimously passed.

The meeting was called back in to regular session at 11:30 by President Storey.

A working session will be held Friday, Jan. 21 at 4 p.m.

Recuperating at Home

Mrs. Elmer Winans, 154 Park, is recuperating at her home following heart surgery at St. Joseph Mercy Hospital. Mrs. Winans had a pacemaker installed and was a patient for two weeks. She returned home Jan. 6.



WHO ME? Mrs. Dorothy Miller receives, with surprise, the Jaycee Distinguished Citizen Award from Dr. Joseph Fisher, 1971 award recipient. Mrs. Miller is the first woman in Chelsea to receive the honor. Walter Brown, left, past president, 1968-70, and Dave Rowe, 1972 president, observe the bestowing of the honor.

Many Activities Planned To Benefit March of Dimes

Area organizations are working together these next few weeks for the success of the annual March of Dimes county campaign.

Campaign chairman Betty Henry said county volunteers are hardworking and enthusiastic in hopes of a successful 1972 campaign.

County-wide, the Pepsi-Cola Co. is offering its product at a nickel savings per carton to the customer, plus a company contribution of a nickel to the March of Dimes for each carton sold between Jan. 24 and Feb. 18.

Volunteers will be campaigning in their neighborhoods for the Mothers' March beginning Jan. 21 in rural areas and Jan. 27 in communities. Both marches end Jan. 31.

Radio station WAAM will broadcast a radio auction from Smith's Floor Covering Jan. 18 and a fashion show at the Town Club in Ann Arbor will be Feb. 5. The \$10 ticket includes lunch and the fashion show. Reservations may be made with Judy Heaton at 971-5942.

Wrestlers Win South Lyon Tournament

Chelsea varsity matmen collected their second invitational tournament championship Saturday at South Lyon.

After getting a slow start this season, the Bulldogs are starting to look stronger as the heavy part of the season gets underway.

Chelsea's Saturday victory was a close one as they had to contend with a tough Dundee challenge. The crucial points which allowed Chelsea to regain the lead and assure the victory were scored by Doug McDonald when he won his championship match over his Brighton opponent.

In addition to McDonald's performance at 135 pounds, Mark Montague scored his fourth tournament championship this year with a finals win over Dundee. Runners-up honors were earned by Larry Jones at 128 pounds, Tim Lancaster at 132 pounds and Rod Brannham in the heavyweight slot. Finishing with a fourth and scoring valuable points were John Beaman at 114 pounds, Keith Kargel at 121 pounds and Daryl West at 145 pounds.

Teams participating at South Lyon were Chelsea, Dundee, Novi, Pickney, Brighton, Monroe Catholic Central, Willow Run and South Lyon.

Coach Richard Barois said that while the team is showing definite improvement, a lot of Saturday's efforts were hampered by illnesses during the week by the wrestlers.

The Bulldogs will travel to Jackson Northwest tonight (Thursday) at 6:30 p.m.

Heating Problems Close Beach School Monday

Beach Middle school students had a brief vacation Monday when school was closed because of a heating malfunction.

Five Boys Born On 13th of Month In Miles Family

Mr. and Mrs. N. H. Miles, 20735 Scio Church Rd., consider the number "13" their lucky number. The Miles' two sons, John and Gary, were both born on the 13th.

They married and each had a son born on the 13th. Last Thursday, Jan. 18, Mr. and Mrs. Gary Miles of Manchester did it again—a son, Shayne. Shayne is the fifth boy in the Miles family born on the 13th. None, by the way, were born on Friday the 13th.

Captains Named For Dimes Fund Mothers March

March of Dimes Mothers March is scheduled for the Chelsea community Jan. 30. These workers will be collecting from their neighbors from 1-3 p.m. and the March of Dimes campaign staff urges your co-operation and consideration for these volunteers.

Mrs. Mitchell Zink, publicity chairman for the Mothers March, has announced the following district captains for the campaign: district one, Mrs. Steve Haydock; district two, Mrs. Joe Verway; district three, Mrs. Herbert Hinz; district four, Mrs. Charles Matloff; district five, Mrs. Roy Greenleaf; district six, Mrs. John Popovich; district seven, Mrs. Norman Fahrner; district eight, Mrs. Richard Harvey; district nine, Mrs. Jack Patrick.

(Continued on page five)

Dorothy Miller Wins Jaycee Citizen Award

Mrs. Dorothy Miller became the first woman in the history of Chelsea Jaycees to receive the Distinguished Citizen Award Tuesday night at the annual Bosses Night Dinner.

Mrs. Miller was chosen from among the eight citizens nominated for the honor. She organized the Chelsea Hospital Volunteers in March, 1970 and is now co-ordinator for the group. The volunteers organize all recreational activities for patients in the Chelsea Hospital. In addition, the group publishes a semi-monthly hospital newspaper, "The Stehlo scope," featuring articles of interest to the patients and staff.

Mrs. Miller also helped organize a teen hospital volunteer group, The Candy Strippers. She works about four days each week as a volunteer and also is vice-chairman of the hospital board of directors.

Wrestlers Pin Parma in Close 24-22 Decision

With the flu bug doing its best to change Chelsea's varsity line up, the Bulldog matmen were still up to defeating a strong Parma-Western team last Tuesday in an exciting come-from-behind victory. Missing from the line up were Mark Montague, Keith Kargel, Larry Jones, Mike Merkel and Tom Hubert.

Western built up an early lead by scoring pin victories at 98 pounds and 105 pounds, Howard Schenk, wrestling at 112 pounds, wrestled well, but lost a close 4-2 decision. Dale Poertner, wrestling at 119 pounds, put Chelsea on the scoreboard with a 3-52 fall victory.

John Beaman also performed well but was defeated in a decision. Western then scored their last points when Mark Baize, filling in at the 132-pound class, wrestled well, but suffered a fall loss. With the score 24-6, Chelsea scored six wins to capture the meet.

At 140 pounds, Tim Lancaster scored a hard-won 6-3 decision. Tom McKernan then defeated a tough opponent, 5-4, in the 145-pound class.

(Continued on page five)

works for a local real estate firm and plays golf near her North Lake home every day—weather permitting.

She has been commended by Mrs. Pat Nixon for her volunteer efforts, and she and Mrs. Nixon have developed a friendship through mail as a result of this recognition.

Mrs. Miller has two daughters, 10 grandchildren and three great-grandchildren.

Following the presentation of the DCA award, the coach of the Michigan gymnastic team showed films of the different aspects of gymnastic competition. He stressed the importance of the sport in physical fitness and said the Michigan team hopes to send a representative to Olympic competition.

Three new Jaycees were also installed Tuesday evening—one of them the first "under 21" member of the Chelsea chapter. Terry Lawrence, 19, was taken into membership under the new policy of the Michigan Jaycees allowing 18-year-olds and older to become members. Also installed as members were Tim Oribing and Terry Whittall.

The dinner was at Kale's Waterfall Supper Club in Ann Arbor and honored the Jaycee's bosses who support the goals of their employees.

U-M Athletes Will Attend Jan. 26 Dinner

Chelsea area residents will have an opportunity to dine with three outstanding sports stars Jan. 26 at the high school cafeteria.

Attending a dinner sponsored by the Chelsea High school baseball team will be Dana Coin, outstanding U. of M. place kicker, Tom Darden, All-American defensive back from the U. of M., and Dan Fife, former U. of M. basketball and baseball star and current property of the Detroit Tigers.

The stars have agreed to sign autographs for the fans. The dinner will be from 5:30 to 7:30 p.m. and will feature a menu of Swiss steak, potatoes, vegetable, special salad bar, dessert and a beverage. Following the

(Continued on page six)



ALL-STAR MUSICIANS: Doug VanGorder, left, and Tom Hubert, members of the Chelsea High school band, were chosen to participate in the

CHS Musicians Chosen For Lansing All-Star Band

Two Chelsea High school band musicians were chosen Saturday to participate in the Lansing All-Star Band, Chelsea High school band director Warren Mayer has announced.

Doug VanGorder, son of Mr. and Mrs. Jack H. VanGorder of 13535 Island Lake Rd., and Tom Hubert, grandson of Mr. and Mrs. V. O. Johnson, of 803 W. Middle, were named to the band during the first rehearsal and try-out at J.H. McLoey High school in Mon-

rose. VanGorder is the band's second chair oboist and Hubert plays first chair trombone.

All-Star band members are chosen on the recommendation of their high school band director and by a committee of band directors.

The All-Star Band consists of two bands of 113 musicians each. Students from class B and D schools, including Chelsea, comprise one band and the other is students from class A and C

schools. The director of the first band is John Paynter, conductor of bands at Northwestern University, Evanston, Ill. Kenneth Bloomquist, director of bands at MSU, directs the other.

The young musicians will have their final rehearsal Feb. 26 in preparation for their Feb. 27 concert. Included in the concert music will be one selection from the Michigan Band and Orchestra Association festival list.

Mich. Youth Symphony Concert Slated

In a unique gesture of co-operation between facets of instrumental music, the Chelsea High school band is sponsoring a concert by the Michigan Youth Symphony Orchestra Sunday, Jan. 30.

The youth symphony, an organization of more than 100 high school and post-high school musicians, is one of Michigan's oldest orchestras. It is conducted by Norval Whithrow, professor in the University of Michigan School of Music.

The orchestra will perform at 3 p.m. in the high school auditorium.

Tickets for the event will be sold prior to the concert by CHS band members and will be available at Strieter's Men's Wear, Foster's Men's Wear and Chelsea Drug. Tickets will also be sold at the door.

Proceeds from the concert will be used for scholarships to band camps and other band activities. The concert will enable Chelsea area residents to hear music performed by an outstanding ensemble. Selections to be performed include "An Outdoor Overture" by Aaron Copland, "The Walk to the Paradise Garden" by Fredrick Delius and following an intermission, Tchaikovsky's "Fifth Symphony."



ACCEPTS DONATION: Owen Loasby, left, accepts a \$250 donation to the Chelsea District Hockey Association from Dr. William Hawks, representative for the Chelsea Medical Clinic. The clinic also sponsors a CHHA team, the Red Wings. The donation will be used to cover expenses for equipment not included in the regular sponsorship, according to Loasby.



Washington Report

by Congressman

MARVIN L. ESCH

One of my most important assignments will begin soon after the Second Session of the 92nd Congress convenes next week.

After two years of deliberations, both Houses passed omnibus bills which will affect post secondary education for the next decade. The Higher Education Amendments of 1971 passed the Senate August 6th and the House on Nov. 4 in slightly different versions. I was appointed to the Conference Committee which will work out the differences between the two bills. I am looking forward to serving on the Conference.

Both bills revise and extend the college work-study and the educational opportunity grants programs. Also revised and extended are the National Defense Education Act of 1958, the Higher Education Facilities Act of 1963, the Higher Education Act of 1965 and the Higher Education Amendments of 1968.

Two types of federal assistance to higher education are new. The Student Loan Marketing Association is modeled after other secondary market mechanisms sponsored by the federal government. The SLMA, as the new group is called, will increase loan market liquidity so that students will have adequate loan funds to continue their education.

A second new federal aid provision is called General or Institutional Aid. This program will provide non-categorical aid to our institutions of post-secondary education, which in recent years have been under severe financial strain.

A new \$1.85 billion program in occupational education is also created in the House bill. I authorized this provision which will grant technical assistance and planning grants to states for their occupational education programs. The Esch Amendment in this bill recognizes that we should encourage all types of post-secondary education. In a recent Department of Labor study it was estimated that by 1980 our economy will require college trained workers for only one job in four. Our need for skilled workers will continue to increase so that state programs in occupational education must be strengthened.

The House bill also prohibits discrimination on the basis of sex in institutions of post-secondary education. It creates a National Institute for Education modeled after the National Institute of Health, to research problems in education. A national commission on the financing of post-secondary education is also created. The Commission will study and report back to the Congress on the feasibility of instituting programs such as the Yale "Pay As You Earn" plan or an Ohio Plan to finance post-secondary education in the future.

The House and Senate bills have several differences as well as several additions which are not directly related to post-secondary education. This promises to make the conference a long and complex one.

Tel-Award Program Open to 4-H Members

The annual Tel-Award Program is available to 4-Hers 14-19 years of age. The state winner in each of the 35 4-H projects will receive a trip to the National 4-H Congress in November 1972.

4-Hers may obtain entry forms from the 4-H office in the County Building in Ann Arbor. These forms are to be completed and returned by Feb. 1.

Telephone Your Club News to HA 6-2291.

Uncle Lew from Lima Says:

DEAR MISTER EDITOR:

I got my weekly laugh last week when I saw by the papers where this woman in France had been crying for 12 days straight. That's all the piece said. It didn't go into why she was crying, and I reckon that was the funny part. I feel sorry for the woman, but I got to laughing when I decided she was crying cause she was missing all the fun in this country.

For instance, she can't share the joys of Ed Doolittle's girl that works in the city. Ed told the fellows at the country store not long back that his girl got a pay raise full blessed by Wage and Price Control, but when they took out her increase in Social Security payment she was making \$2.80 less a week than she was afore.

That's the way we keep up with the cost of living in this modern age, was Ed's words. It ain't no wonder that \$15,000 a year man quit his job in South Carolina cause they give him a raise, allowed Ed, he probably couldn't afford it.

And since we devalued the dollar, went on Ed, if you ain't no sounder than one you ain't able to be up and about. This must be the only place in the world allowed Ed, where a feller can go bankrupt making \$24 a month payments on everything in his house.

but he can borrow money at nine per cent interest to put up a business that does a million dollar a year business and returns him two per cent on his money. All he's got to do is tell the Government, said Ed, cause if anybody knows how it feels to come out on the little end of borrowing, it's them.

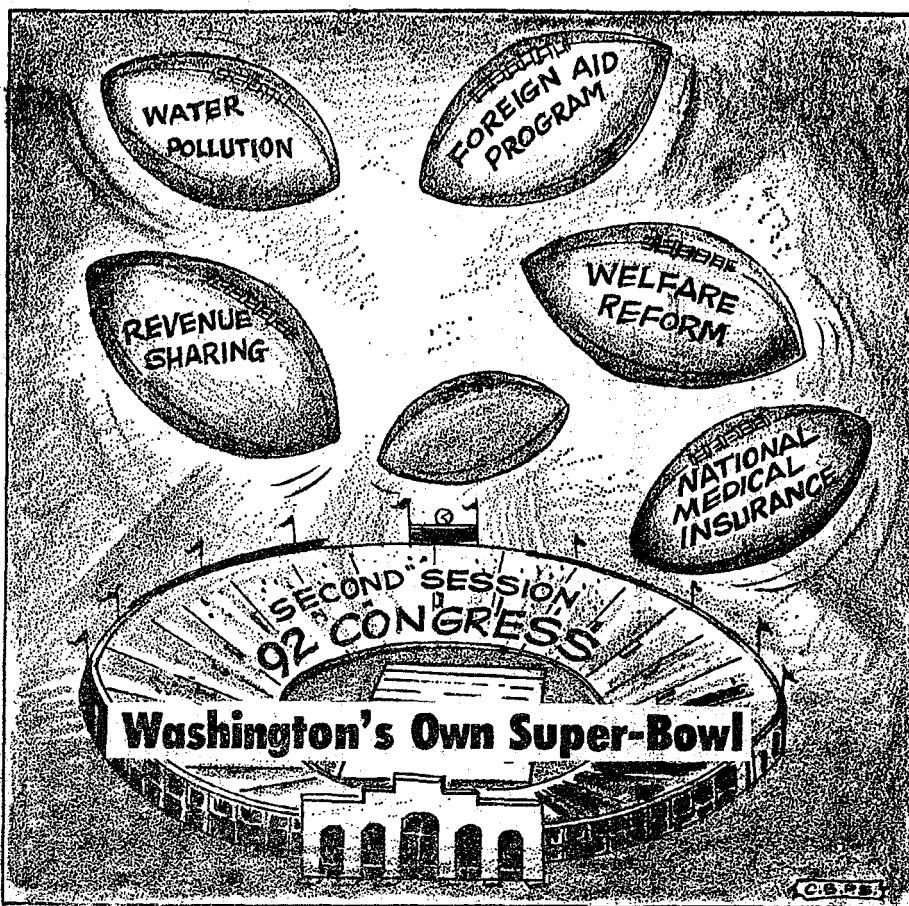
Since 1946, we have give other countries more than \$140 billion we borrow, and we had to raise our limit to \$220 billion so our debt would be legal. We'll probably go in the hole another \$20 billion this year, while our President keeps talking about sharing "revenues" with the states. And even India a country gets a charter, like India done in the war with Pakistan, they show us how much they appreciate our help. And that woman in France is crying.

This is the kind of country where when Congressmen get ashamed of folks talking about the money they get for not farming, they plant their land in gords and elephant grass and write the crops off their taxes cause nobody will buy what they raise. This is where youngsters get kicked out of college cause they bought the same homework from the same outfit, and they sue the homework company for damaging their character. This is where counterfeiters don't even bother to make paper money green, cause our vending machines is color blind.

Yessir, this is where we got real lemon in floor wax and artificial lemon in lemon candy, and where a scientist serious says cigarette smoking causes face wrinkles from squinting in the smoke. My rinkles is from laughing.

Yours truly,

Uncle Lew.



MICHIGAN MIRROR

By Elmer E. White, Secretary, Michigan Press Association

Year Promises Variety

It's still almost 10 months to General Election Day, but it already appears safe to predict there should be something to appeal to everybody on the ballot when the polls open Nov. 7.

First on the list, in theory at least, is the contest for Michigan's 21 electoral votes for the presidency. But that may prove one of the less glamorous issues in this predominantly Democratic state by the time election day gets here.

If it appears certain the state will go to the Democratic candidate, then the spotlight is going to shine directly on the race for the U.S. Senate seat now held by Sen. Robert P. Griffin and which he will try to retain. There are also such highly emotional issues as abortion reform and abolition

of local property taxes for schools.

In the presidential category, President Nixon has never carried Michigan. He has shown little interest in the state since he was elected, having made only one visit here. It is expected that the Democrats will carry the state.

As far as the convention goes, Nixon can expect to get nearly all of Michigan's 48 votes at the Republican convention, though the liberal candidacy of Rep. Paul McCloskey and the conservative bid of Re. John Ashbrook could peel off a few votes each.

On the Democratic side, the state's leadership seems to be lining up quite solidly in the camp of Maine's Sen. Edmund Muskie. Muskie's forces in the state are headed by former party chairman Sander Levin, the man who almost unseated Gov. William Milliken in 1970. Also firmly in the Muskie camp are U.S. Sen. Philip Hart and Michigan House Speaker William A. Ryan, by far the most powerful Democrat in Lansing.

The Senatorial race will match Griffin against a Democratic challenger—probably Attorney General Frank Kelley—plus several other splinter party candidates. Kelly antagonism in the party have tried to find an alternative, but no one has picked up the torch. His only primary opposition could come from former Detroit Mayor Jerome Cavanaugh, who has been having trouble raising money.

On the conservative side of Griffin will be a candidate sponsored by the Conservative Party formed by former State Sen. Robert Huber, the man who almost knocked Lenore Romney off in the 1970 primary.

On the liberal side of Kelly will be a candidate sponsored by the Human Rights Party, which counts former Democratic State Chairman Zolton Ferency in its ranks.

The outcome of the Senate race could hinge on whether Huber's party or Ferency's party can pull away the most voters.

In the issue category, the most emotionally charged by far is the question of whether to rewrite the state's more than 100-year-old abortion law to allow abortions in instances other than when the mother's life is endangered.

MONEY

TROUBLE?
ONE PLACE TO PAY!

Credit Management Service
662-2565
215 South Fifth Ave.
Ann Arbor
State Licensed and Bonded

IF YOUR ROOF IS HURTIN' Call Burton!

- ★ Old and New Roofs
- ★ Hot Tar and Metal Roofs
- ★ Aluminum Siding
- ★ Aluminum Awning and Storm Doors and Windows
- ★ Seamless Aluminum Eaves Troughs and Down Spouts
- ★ Mobile Home or Trailer Skirting



COOPERATIVE ROOFING & SIDING CO.
Call 662-5900 or 662-3288
Evenings Call Burton Rathburn, 663-0754

JUST REMINISCING

Items Taken from the Files of The Chelsea Standard

4 Years Ago...

Thursday, Jan. 25, 1968—George Heydlauff and Bruce Galbraith won the Distinguished Service Award and the Outstanding Young Educator Award, respectively, presented by the Chelsea Jaycees at the Bosses' Night Banquet. Heydlauff is in business with his father at Frigid Products and Galbraith is an instructor of musical instruments in the Chelsea schools.

At the morning service on Jan. 28, members of First Congregational church will dedicate their new pipe organ. The new organ contains 574 pipes and has two manual divisions and one pedal division. A set of 21 Deagan chimes were given to the church by Mr. and Mrs. D. H. Bacon. The congregation voted to purchase the \$16,475 organ on March 12, 1967. It was first used for services Sept. 17 this year.

Charles Roundtree has recently been appointed program director of the Chelsea Methodist Home. Roundtree is a native of Ecorse and has worked in the fields of psychiatric occupational therapy, pediatrics, physical medicine and rehabilitation. He will be responsible for developing the range of the home's activities for the residents. He is the home's first full-time program director.

Conservation Officer Donley Boyer has been officially promoted to supervisor with the conservation department. He will continue to work from the Chelsea work station.

14 Years Ago...

Thursday, Jan. 23, 1958—Walter Wolfgang and Horace Whitney will be among those honored at the Farm Management banquet Jan. 30 at Farmers' Week at Michigan State University. The two were honored for participating for 20 years or more in the Farm Account and Farm Business Analysis project of the MSU Agricultural Economics Department.

Mr. and Mrs. George Heydlauff have won a trip to the Bahamas Islands sponsored by General Electric as an award for a television sales record attained by Frigid Products in state-wide competition.

Mr. and Mrs. Robert Shears saw a herd of approximately 30 deer in a field on the farm of Mrs. Herman Mohrlock near their home Sunday morning. The deer were not frightened away at shouts and calls and seemed quite at home while the family took pictures of the large herd.

24 Years Ago...

Thursday, Jan. 22, 1948—Perfect attendance records at St. Paul's Sunday school for 1947 were made by Mrs. Herbert Paul, Patricia, Hopper, Duane Satterthwaite, David Bertke, Richard and Douglas Schneider and Barbara Bertke. All will receive awards for their achievements.

The Washtenaw county Board of Supervisors approved the purchase of two-way police car radios over the county, including Chelsea and the county sheriff's office.

The Rev. M. W. Brueckner attended a mass meeting at the Civic Auditorium in Toledo to hear a lecture by Dr. S. C. Michelfelder. Dr. Michelfelder has just returned to the United States after two years in Europe.

Pfc. Charles Slane, who spent 11 of his 17 months of army service overseas and was stationed at Chun Chon, Korea, has received his honorable discharge and is now at home with his parents, Mr. and Mrs. Charles Slane on North St.

Norman Wenk was honored with a surprise celebration of his birthday which was arranged by Mrs. Wenk. Progressive euchre was played and prizes won by Mrs. Duane Weiss, Arthur Wilson, Mrs. Willard Kuebler and Ralph Oesterle.

34 Years Ago...

Thursday, Jan. 20, 1938—A social dance club was organized with the following officers: president, Floyd Allhouse; secretary, Henry Ahnemiller; treasurer,

er, Wesley C. Smith; floor committee, Rex Richards, Ezra A. Tisch.

The resignation of Mrs. Cecil Miller as treasurer of Sylvan township was presented to the township meeting. The board appointed Mrs. Theodore Bahnmiller to replace her. Mrs. Miller is now a part-time clerk at the local post office.

Varsity letters were presented to the following athletes at the annual football banquet honoring the Chelsea high 1937 players: Belser, Bruckner, Niehaus, Kosbe, Spaulding, Rowe, Rabley, Bahnmiller, White, Haselschwerdt, Fletcher, Strieter, Slocum, Schneider, Bartok, Novess and Watson.

The Pilgrim Fellowship young people of the Congregational church enjoyed a coasting party at the Chelsea Greenhouse Hill and returned to the home of the Rev. and Mrs. Ray W. Barber for a hamburger fry. Chaperons for the group were Matthew McGaffigan, Jr., and Mr. and Mrs. M. W. McChure.

Popular Segments of Past Year Reviewed on Special TV Show

East Lansing — The Great American Dream Machine brings back some of the most popular segments of the past season at 7 p.m. Friday, Jan. 25, on WMSB (Channel 10), Michigan State University television.

Among the segments is a "Great American Dream Machine" profile of stripper Blaze Starr and a conversation with Harry Belafonte and Sidney Poitier.

Pete Seeger is on hand to supply the music for animator Bob Blechman's modern version of the biblical story of Abraham and his son Isaac and consumer expert

Marshall Efron ponders the question of the trash-masher as a symbol of modern American efficiency.

Rounding out the program the Dream Machine visits a commune, talks with a couple divorced after 15 years of marriage and presents an animated film about a man who runs into difficulty when he tries to deposit money in a bank.

The tragic story of Anne Boleyn, Henry VIII's most famous wife and the mother of Elizabeth I, is presented in the second part of the six-part series "The Six Wives of Henry VIII" at 11:30 a.m. Sunday, Jan. 23.

NEXT STOP AFTER EYE EXAMINATION For Quality Service LENSES - FRAMES

WINANS OPTICAL

PHONE 475-1233

114 N. Main (in Sylvan Hotel) Chelsea, Mich.

DAVID WINANS, Optician

(30 Years with Johnston Optical Co.)

APPOINTMENTS NOT NECESSARY

NORTH LAKE ORCHARD

H. WEBB, OWNER

13620 N. Territorial Rd. (Next to Golf Course) Gregory, Mich.

An all-around yearly appreciation to express thanks to together with customers for this Certified Farm Market. A friendly place to buy fruit.

Please notice new hours:

OPEN FRIDAY, SATURDAY & SUNDAY

12 NOON TO 6 p.m.

or when light is on in sales office.

SWEET CIDER available, pressed from Coldwater.

While They Last — A variety of good apples:

NORTHERN SPIES - IDA RED - RED DELICIOUS

YELLOW DELICIOUS & ROMAN BEAUTY

at Modest Prices.

If bad weather, use my phone, 475-2070.

JANUARY CLEARANCE

STORE-WIDE SALE

BIG SAVINGS!

Stop in now to choose while the selection is still good!

MEABON'S TV, FURNITURE & APPLIANCES

1170 S. M-52, Chelsea

Phone 475-5191

\$300.00 Allowance

For ANY Car!! Hundreds More

Depending on Year and Condition

1965 CHEVROLET	\$295 - 300	1968 FORD Galaxie 500 XL	\$1095 - 300
Station Wagon	?	Bucket Seats Air Condition	\$795
1967 MUSTANG	\$1195 - 300	1968 FORD FAIRLANE 500	\$1195 - 300
V-8 Automatic	\$895	2-Dr. Hardtop	\$895
1969 FORD 3/4 TON	\$2295 - 300	1969 FORD 4-DR. V18	\$1595 - 300
Camper Special	\$1895	Automatic, Power Steering	\$1295
1970 LTD Squire Wagon	\$3295 - 300	1970 FORD GALAXIE 500	\$2295 - 300
10-Pass., Loaded with extras.	\$2995	Squire Wagon 2-Dr. Hardtop. Like new.	\$1995
1971 CHEVROLET Vega Hatchback	\$1895 - 300 \$1595		

PALMER FORD

Open Mon., Wed., and Thurs. Till 9:00

CHELSEA

GR 5-3271

HEARING AIDS

SALES and SERVICE
REPAIRS, ALL MAKES - RENTALS
Free Home Demonstrations

ADCO HEARING AID CENTER

Phone (313) 663-2405 Ann Arbor, Mich.

Established 1871 The Chelsea Standard Telephone GR 5-3581

Excellence Award By Michigan Press Association

1951-1952-1960-1964-1965-1966

Walter P. Leonard, Editor and Publisher

Published every Thursday morning at 300 North Main Street, Chelsea, Mich. 48118, and second class postage paid at Chelsea, Mich., under the Act of March 3, 1879.

Subscription Rates (Payable in Advance)
In Michigan: One Year \$4.00 Six Months \$2.25 Single Copies \$.15
Outside Michigan: One Year \$6.00 Six Months \$3.50 Single Copies \$.20
Service men or women, anywhere, 1 year \$4.00

MEMBER
NATIONAL NEWSPAPER
Association - Founded 1885

National Advertising Representative:
MICHIGAN NEWSPAPERS, INC.
257 Michigan Ave.
East Lansing, Mich., 48823

Nation-wide Song Project Pushed To Welcome Spring

What started as the brainchild of a Jaycee from Michigan has grown into a nation-wide project aimed at joining all the voices of all the people in a song of Brotherhood on the first day of spring, March 21.

It was one of those "Wouldn't it be nice..." kind of things that has snowballed into a really big project, sort of akin to the "Let Freedom Ring" event of July 4th some years back, when every bell in every town was to ring at noon on July 4th for Freedom. network-wide across the nation at the 10 a.m. break. The Today Show is reportedly joining in by signing off at 10 a.m. with the song.

It's hoped that in factories, offices, schools, stores, homes, and wherever people or individuals are that day, they'll join in.

The words, in case you want to clip them to have handy at that time, follow:

I'd like to build the world a

home and furnish it with love, grow apple trees and honey bees and snow white turtle doves.

I'd like to teach the world to sing in perfect harmony.

I'd like to hold it in my arms and keep it company.

I'd like to see the world for once all standing hand in hand and hear them echo through the hills for peace throughout the land.

I'd like to teach the world to sing in perfect harmony, I'd like to hold it in my arms and keep it company.

La, la, la, etc.

March 21 is a Tuesday. Mark it on the calendar and we'll remind you again before then. The school kids may be going out of the buildings to sing the song at that hour, so step outside to do your singing and you may just be able to hear them, all 2,000 of them.

Telephone Your Club News
To Gilt 5-3581.

THE LANSING REPORT

FROM

senator
**GIL
BURSLEY**



The Question of School-Financing Reform (Third in a series)

On Aug. 30, 1971, the Supreme Court of the State of California handed down a historic ruling on the question of "whether the California public school-financing system, with its substantial dependence on local property taxes and resultant wide disparities in school revenue, violates the equal protection clause of the 14th Amendment."

The court's answer to this question can be summed up with the following phrase from the preface of the decision:

"We have determined that this

funding scheme invidiously discriminates against the poor because it makes the quality of a child's education a function of the wealth of his parents and neighbors. Recognizing as we must that the right to an education in our public schools is a fundamental interest which cannot be conditioned on wealth... We have concluded... that such a system cannot withstand Constitutional challenge and must fall before the equal protection clause."

Since that time, similar rulings have been made by a circuit court

in Minnesota and a federal court in Texas. And legislators, educators and other concerned citizens have been asking a question here that is being echoed in practically all states, with exception of Hawaii.

What do the recent court decisions mean for Michigan?

This question has a special urgency here, since the subsequent announcement by Governor William Milliken and Attorney General Frank Kelley that they have jointly initiated action to have the Michigan Supreme Court declare our school-financing system unconstitutional in the same manner and for the same reasons.

Practically all of the determining factors in the landmark California decision (Serrano v. Priest) are paralleled here in Michigan.

The inequities in per-pupil expenditures among local school districts are strikingly similar; and in both states, those inequities are inherent in the very nature of the school-financing system.

In California, 55.7 percent of educational revenue comes from local property taxes (as compared to 52.8 percent in Michigan). In both states, the balance is derived from federal funds and miscellaneous sources.

California distributes state aid to the local districts by means of a "guaranteed support" level that is completely comparable to Michigan's "gross allowance" and a "hypothetical tax" that works exactly like Michigan's "gross allow."

By way of citing inequities, the California court noted that per-pupil expenditures in the state ranged from \$612 to \$2,414 in school districts containing both elementary and secondary schools in 1969-70.

In Michigan that same year, the range of per-pupil expenditures among K-12 districts was from \$410 to \$1,276. (It has since widened and can be currently estimated at from \$500 to over \$1,500.)

In light of the strong similarities, there can be little doubt that the logic of the California decision, if applied to Michigan, would necessitate a drastic restructuring of our school-financing system.

It should be made clear that none of the recent court rulings "outlaw" or even condemn property taxes as a means of school financing. They merely condemn the inequities that result when property taxes are levied, at varying rates, in districts that are "rich" and "poor" in terms of taxable property or "SEV."

In other words, if property taxes were collected uniformly throughout a state, and redistributed in an equitable manner to local districts, the practice would not be in conflict with any of the decisions. It might be mentioned that considerable disagreement currently exists, among educational legal experts, as to the exact implications of the court rulings. In general, there seem to be two basic interpretations.

One school of thought, arguing for the so-called "fiscal neutrality" concept, merely emphasizes the point that "the quality of a child's education" cannot be "a function of the wealth of his parents and neighbors."

Other authorities, arguing for the so-called "equal educational opportunity" concept, insist that a child's education cannot be dependent upon either the wealth of his parents and neighbors... or their willingness to tax themselves to support education!

The difference between these two concepts is extremely important, as the legislature ponders pending proposals for school-financing reform.

The first would permit the previously mentioned "Equated SEV" or "Guaranteed Tax Yield" system, as it exists in Utah and as

it is presently being proposed for Michigan by Representative Roy Spencer. (A subsequent report will discuss this proposal in detail.)

The state would maintain "fiscal neutrality" by guaranteeing each school district the same per-pupil return on any given level of local taxation, but the decision as to what that level should be would remain with the local districts.

On the other hand, the second concept would require the state to go beyond "fiscal neutrality" and guarantee each student a relatively equal amount of support for his education, or a relatively equal program offering.

Local district determinations as to the level of taxes to be imposed for financing education would be either non-existent or very limited.

It can be hoped that the Michigan Supreme Court will clarify this controversy and will offer further judgment as to the degree of leeway that might be allowable in deviating from a strict compliance with either concept.

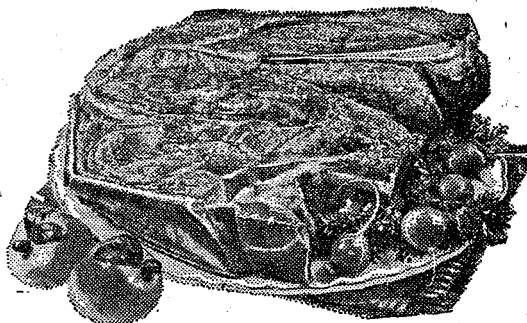
But clearly enough, Michigan's present system would be allowable under neither!

If our system were subjected to the same constitutional challenge, before any court utilizing rational, (Continued on page five)

Got A Sweetheart?

FULL SUPPLY OF

VALENTINE CANDY & CARDS

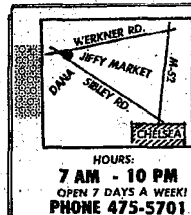


U. S. CHOICE BEEF

CHUCK ROAST

Blade Cut 7 Bone Arm Cut English Cut

69^c lb. 79^c lb. 89^c lb. 89^c lb.



Jiffy market

CORNER OF SIBLEY & WERNER RDS....CHELSEA, MICHIGAN

SALE PRICES EFFECTIVE THURSDAY, JAN. 20, THRU SUNDAY, JAN. 23, 1972.

Store Hours Are 7 a.m. to 10 p.m. 7 Days A Week

FRESH GROUND

HAMBURGER 69^c lb.

ECKRICH ALL-MEAT

FRANKS

12-Oz. Pkg. 59^c

GLENDAL SLICED

BOLOGNA

1-Lb. Pkg. 69^c

ECKRICH

SLENDER SLICES

3 pks. \$1⁰⁰

FARMER PEET'S

SHORTENING

2 lbs. 45^c

WHOLE

PORK LOINS

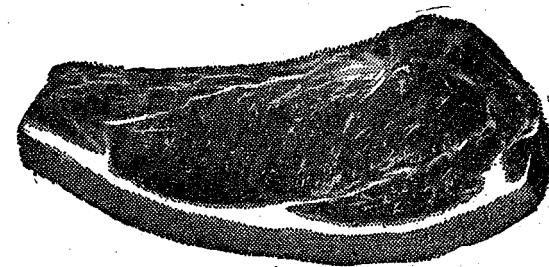
69^c lb.

Cut into roasts or chops.
Packaged and quick frozen
at no extra charge.

Top Quality Merchandise

NO STAMPS - NO COUPONS

Friendly Service & a Thank You!



U. S. CHOICE BEEF

RIB STEAKS

\$1.29 lb.

SEVERAL STEERS NOW READY FOR MARKET - Quarters and Sides of Beef Available for Your Freezer

GOLD MEDAL

FLOUR

5-Lb. Bag 45^c

KLEEN-MAID

BREAD

1 1/4-Lb. Loaf 19^c

RISON'S HOMOGENIZED

MILK

89^c gal.

MICHIGAN

SOUR CREAM

39^c pt.

BLUE RIBBON

MARGARINE

19^c lb.

BANQUET

FRIED CHICKEN

10 or more pieces - Fully cooked - Frozen

2 Lb. Box \$1.39

FRESH BAKERY

SPECIALS

COFFEE CAKES

Date - Apple

Pineapple - Cherry

59^c

Thursday - Friday - Saturday

COCA-COLA

8

16-Oz. No-Return Bottles

99^c

Equals 1 Gallon!

MICHIGAN

SUGAR

5-lb. Bag

49^c



Glacier Club ICE CREAM

Half Gallon for only

59^c

STEHOUWER'S

SIZZLE STEAKS

1-Lb., 2-Oz. Pkg. Frozen \$1.19

6 Steaks

TIDE

3-Lb., 1-Oz. Box 69^c

PET FOODS

SPECIAL

PURINA DOG CHOW

25-Lb. Bag

\$2.99

JESTER

DOG FOOD

Beef - Chicken - Liver

15 1/2-Oz. Can 10^c

HERSHEY'S

CHOCOLATE SYRUP TOPPING

1-Lb. Can 19^c



Duncan Hines LAYER CAKE MIXES

29^c

PLUS: Free Pound Cake Recipes in our Store

BANANA POUND CAKE

(Makes 12 to 16 Servings)

1 package Duncan Hines Banana Supreme Deluxe Cake Mix 1/2 cup Crisco Oil*

1 package banana or vanilla instant pudding mix (4 serving size) 1 cup water 4 eggs

Preheat oven to 350°.

Blend all ingredients in a large bowl, beat at medium speed for 2 minutes. Bake in greased and floured 10-inch tube pan at 350° for about 45-55 minutes, until center springs back when touched lightly, cool right side up for about 35 minutes, then carefully remove from pan.

Glaze: Blend 1 cup confectioners sugar with 2 tablespoons milk. Drizzle over cake.

When Baking At High Altitudes: Stir 6 tablespoons flour into mix. Mix as directed using 1 package vanilla or banana instant pudding mix, 1/2 cup Crisco Oil*, 1 1/4 cups water, and 4 eggs. Bake at 375° for about 40-50 minutes.

*Be sure to use Crisco Oil as some other oils may cause the cake to fall.

MARATHON DISCOUNT GAS PUMPS

Finest Top Quality Gas at Low Discount Prices!

GAS PUMPS & STORE OPEN 7 a.m. to 10 p.m. 7 Days a Week

Thank You



We appreciate your business!

MARATHON

REGULAR

GAS

33.9 gal.

Includes All Taxes

MARATHON

PREMIUM

GAS

37.9 gal.

Includes All Taxes

KLEER - VIEW

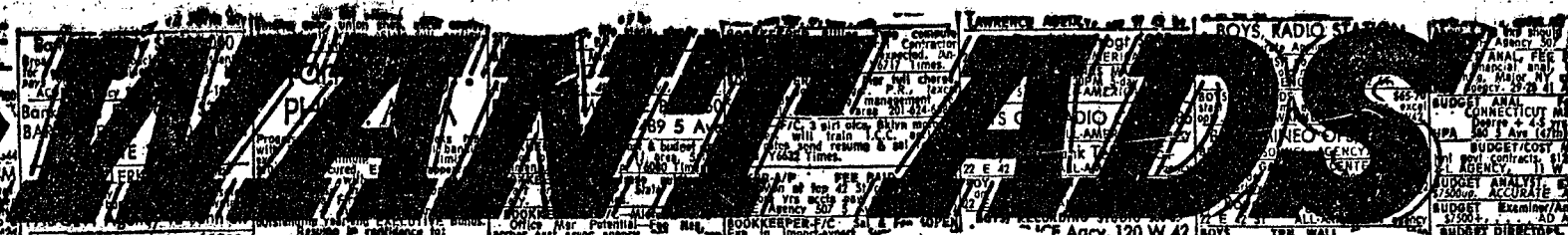
WINDSHIELD WASHER

SOLVENT

59^c gal.

Ads
Taken
Till 5 p.m.
Tuesday

IT'S EASY TO BUY-SELL-RENT- HIRE & FIND WITH



Just
Call
GR 5-3581

WANT ADS

The Chelsea Standard

WANT AD RATES

PAID IN ADVANCE—All regular advertisements, 50 cents for 25 words or less, each insertion. Count each figure as a word. For more than 25 words add 2 cents per word for each insertion. "Blind" ads or box number ads, 85c extra per insertion. CHARGE RATES—Same as cash in advance, with 15 cents bookkeeping charge if not paid before 5 p.m. Advance preceding publication. Pay in advance, send cash or stamps and save 15 cents. DISPLAY WANT ADS—Rate, \$1.10 per column inch, single column width only. 3-point and 14-point type only. No borders or boldface type. Minimum 1 inch. CARS OF THANKS or MEMORIALS—Single paragraph style, \$1.00 per insertion for 50 words or less; 2 cents per word beyond 50 words. COPY DEADLINE—5 p.m. Tuesday week of publication.

KNAPP SHOES

For Cushion Comfort

Robert Robbins
475-7282

FORMAL WEAR

RENTAL SERVICE

Proms - Weddings - Special Events
6 different colors.

Foster's Men's Wear

Real Estate For Sale

LARGE COUNTRY HOME — 3 bedrooms, 3 baths, formal dining room, family room with fireplace, rec room ready for paint or paneling, 2 1/2-car garage. Price reduced to \$55,000.

3-BEDROOM BRICK—Overlooking Inverness golf course. North Lake access. 2 fireplaces, 2 ceramic baths, full basement, 2-car garage. Brand new.

CLARENCE WOOD

BROKER
Efficient PERSONAL Service
646 Mlanders St., Chelsea
Phone 475-2033

FOR REAL DOLLAR SAVINGS be sure and see us before you buy any new or used car. Palmer Motor Sales, Inc. Your Ford Dealer for over 50 years. DINNER WITH THE STARS on Wednesday, Jan. 26th, 5:30-7:30 p.m. Adults, \$2.50, children under 12, \$1.50. Tickets from any Chelsea High baseball team member. Proceeds to Chelsea Baseball Clinic fund.

Set-Up Man - Operator
Screw Machine Dept.

SELF STARTER

Initially responsible for all set-up and operation of screw machines. Must be promotable to supervision over entire automatic machining department.

Apply

MR. R. MENTLEY

O & S Bearing
& Mfg. Div.

777 W. 8 Mile Rd.
Whitmore Lake, Mich. 48189
Phone 449-4401

WANT ADS

BOARDING, trimming, training. Town and Country Kennels, Jackson Rd. at Baker. NO 8-7200.

Gem Travel Trailers

and Campers

PICK UP COVERS

47" ————— \$100.00

26" ————— \$179.00 and up

Triangle Sales

Chelsea 475-4502

CLOGGED

SEWER

Reynolds Sewer

Service

We Clean Sewers Without Digging
Drains Cleaned Electrically

FREE ESTIMATES

2-YEAR GUARANTEE

Phone Ann Arbor NO 2-5277
"Sewer Cleaning Is Our Business—
Not a Side Line"

Buying Or Selling?

Property does sell in the winter time. If you (or a friend) are thinking of buying or selling, don't hesitate to give us a call, and we will be pleased to discuss your property with you.

Over 200 salesmen working for you
through our multiple listing service.

Spear & Associates

REALTORS

1985 Pauline Plaza

Ann Arbor, Mich.

Bus. 769-5750

Res. 769-9380

FURNITURE SALE

All Stock Reduced
10% to 40%

Now thru Jan. 29

MERKEL Home Furnishings

"W"

JUST WEST of Grass Lake, 12x60 mobile home on shaded, private one-half acre lot. \$9,500.

LAKEFRONT, just 2 minutes from I-94. Nice, shaded, large lot and 3-bedroom home. \$19,000.

LAND, in 15, 20, 25 acre parcels or more. In Waterloo and Grass Lake area. Land contract available. \$500 and \$800 per acre.

Winfrey, Inc.

(517) 784-8581

KIRA HENRY

(517) 764-1416

CAR & TRUCK LEASING. For details see Lyle Christwell at Palmer Motor Sales, GR 5-8271.

FOR SALE—1966 Chevrolet Blacayne 2-dr., 6-cylinder, manual shift. Call 475-8055.

WANT ADS

ROBERT PATRICK for home improvement, building and maintenance. Ph. 475-7460.

HAMMOND ORGAN teachers wanted to teach in their own homes. Call Grinnell Brothers, Ann Arbor, 662-5667.

CALL FRANK for all your carpet cleaning jobs, morning or weekend. Needs only 3 hours to dry. Only 10c per square foot. Phone now for free estimate, 761-4328. All work guaranteed.

PIANO TUNING, Chelsea and area. Facilities for reconditioning and rebuilding. Used piano sales; reconditioned grands and verticals. E. Eklund, 426-4429.

Contractor Servicing

Chelsea, Dexter and

Manchester Areas

Complete Home Remodeling

Inside and Outside

Specializing in extra living space, recreation rooms, kitchens and paneling. Installing all aluminum products, 5" eavestroughs, custom-made awnings, windows and doors, aluminum siding in many selected colors and styles.

Please Call

DALE COOK

Chelsea 475-8863

NOW

Full Time

Complete

Body Shop

Service

Stop in For An Estimate

PALMER FORD

222 S. Main St.

475-3271

MARY WOLTER REAL ESTATE

ONE OR TWO ACRE building site. Joslin Lake privileges. \$4,000 for one acre, \$7,000 for both. Quiet location.

TWO-ACRE BUILDING SITE with trees. Gently sloping. Restricted location, near McGregor Rd. and Portage. \$10,000, terms.

NEAR PATTERSON LAKE, two small lots, 45x90. Can build on both. Both for \$1,500.

ONE-THIRD ACRE building site. Hillside with trees. Portage Lake privileges with private beach. \$12,400 with terms.

PATTERSON LAKE CHAIN. Two canal front lots. Quiet location. Sodded and cement seawall. Both lots together, 90x180. Only \$7,000 for quick sale.

LOCH ALPINE. Beautiful hilltop building site. View of lakes. \$9,000, terms.

DOYLE RD. and M-36, 10-acre building site near Gregory \$1,000 per acre. Also 40 acres for \$25,000, terms.

PLAINFIELD and M-36. Vacant 130 acres. All 40 acres, \$800 per acre.

LIBERTY RD., Ann Arbor — 160 acres. Attractive 9-room home and farm buildings. 10 acres of woods, 150 acres tillable.

109 ACRES, Wagner Rd., 4 miles from Ann Arbor with 9-room home and farm buildings.

GREGORY—4-bedroom home and 9 acres. New furnace and roof. Large barn. Only \$28,000, terms.

Mary Wolter Real Estate is very happy to announce that Toby Peterson of Chelsea has joined her staff of sales people and will be at the North Lake office. His many years of business experience will be a great asset to our organization. His phone is 475-8609. We are also happy to welcome Judy Gruener of Gregory who will also be at the North Lake office. Her home phone is 498-2426. Judy has much to offer with her decorating experience and enthusiasm for people. Mary also wishes to thank Alvin Dieffenhauer of Gregory for his continued help and loyalty. His many years of farm and business experience are appreciated. His phone is (517) 861-8495.

MARY WOLTER

REAL ESTATE

7421 Dexter-Pineknay Rd.

Phone 426-8188

NORTH LAKE BRANCH OFFICE

14034 N. Territorial Rd.

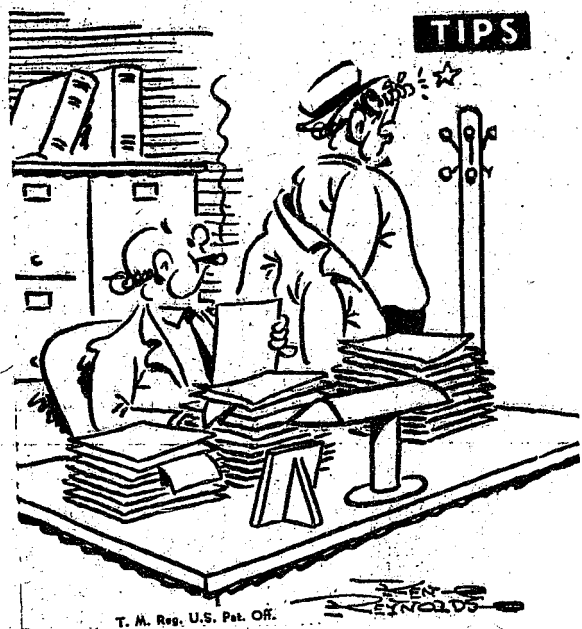
Phone 475-8603

G. G. HOPPER

Building Contractors

Phone GR 5-5581

Gregory 498-2148



T. M. Rep. U.S. Pat. Off.

"My wife coaxed me into buying her the car she saw in the Standard Want Ads—and I hope her fist is sore for a month!"

WANT ADS

BLUE Lustre not only rids carpets of soil but leaves pile soft and lofty. Rent electric shampooer \$1. Dancer's.

PATCHING and PLASTERING. Call 475-7489.

A fine selection of

New and Used Cars

for immediate delivery

Harper Pontiac

Sales & Service

475-5311

Evenings, 761-2999

FURNITURE

SALE

All Stock Reduced

10% to 40%

Now thru Jan. 29

MERKEL Home Furnishings

TRAVEL TRAILERS — 18-ft. and up; 10x55 ft. trailers. John R. Jones Trailer Sales, Gregory, Mich. Phone 498-2655.

REPAIR SERVICE for household refrigerators, freezers and garbage disposers. Call Bill, 426-8314.

FAMILY BIBLES repaired. Academy Book Bindery, 3225 Central, Dexter, 426-8081.

CAR RENTAL by the day, week-end, week or month. Full insurance coverage, low rates. Call Lyle Christwell at Palmer Motor Sales GR 5-3271.

Custom

Kitchen Cabinets

and

Formica Tops

Made to Order

475-2857

TEXAS OIL COMPANY has opening in Chelsea area. No experience necessary. Age not important. Good character a must. We train. Air Mail A. T. Dickerson, Pres., Southwestern Petroleum Corp., Ft. Worth, Tex.



We never get our

signals crossed . . .

No confused moments here! We get your instructions right the FIRST time . . . then hop to your job.

If this is the kind of prompt, efficient service you're looking for . . . you're the kind of customer we're looking for.

PURE OIL PRODUCTS

Jim's Union 76 Service

Tires — Batteries — Tune-Ups — Brake Service — Wheel Alignment

PHONE 475-2822 501 SOUTH MAIN

WANT ADS

SPIKE'S

FLEA MARKET

ANTIQUES and COLLECTIBLES

Every Saturday

and Sunday

11 a.m. to 7 p.m.

Auctions

Every Saturday

at 7 p.m.

Dealers and public invited.

4065 Page Ave.

Michigan Center, Michigan

(Page Ave. Exit, east 7/10 mile)

Phone (517) 764-0250

WONDERFUL WORLD of beauty, Viviane Woodard Cosmetics, a subsidiary of General Foods, needs attractive woman here to learn and teach professional make-up techniques. Also possible to have small business of your own. Dorothy Orbring, director, 475-8785. M. Saturday 475-5481.

Special of the Week

1971 Riviera, vinyl top, air cond., new condition. Low mileage. \$4795

USED CARS

1970 Electra 225 Limited 2-dr. hardtop, air cond. \$3895

1970 Buick LeSabre Custom 4-dr. hardtop. Vinyl top, air cond. \$2995

1969 Electra 225 Custom 2-dr. hardtop. Vinyl top, air cond., full power \$2995

1969 Chrysler Newport 2-dr. Vinyl top, air cond, One \$1995

1969 Chevrolet Impala 4-dr. sedan. Air, AM-FM stereo, p.s., like new, one owner \$1895

1968 Toronado. Clean, air cond. \$1995

1968 Chevrolet Malibu 2-dr. hardtop. Vinyl top, 307, p.s., a.t. \$1395

1968 Ford LTD 2-dr. hardtop. Vinyl top, very clean \$1395

1967 Electra 4-dr. sedan. Vinyl top, air cond. \$1595

1967 Buick LeSabre 4-dr. hardtop. Clean \$1195

1967 Buick LeSabre 2-dr. hardtop \$1195

1967 Buick LeSabre 4-dr. sedan \$1195

1967 Cutlass 4-dr. sedan. Clean, one owner \$1195

1967 Chrysler Newport 4-dr. sedan. Air cond., clean \$1195

1966 Toronado. Clean, one owner \$1095

1968 Ford Fairlane 500 3-seat wagon \$795

1962 Volkswagen. Sun roof \$395

SPRAGUE

Buick-Olds-Opel, Inc.

1500 S. Main St., Chelsea

Phone 475-8664

DINNER WITH THE STARS on Wednesday, Jan. 26th, 5:30-7:30 p.m. Adults, \$2.50, children under 12, \$1.50. Tickets from any Chelsea High baseball team member. Proceeds to Chelsea Baseball Clinic fund.

2-CYCO FUEL

For All 2-Cycle Engines

WHITE GAS

Available at

Gateway

Sports Centre, Inc.

FURNITURE

SALE

All Stock Reduced

10% to 40%

Now thru Jan. 29

MERKEL

Home Furnishings

BABYSITTING in my home for 1 or 2 children. Phone 475-7441.

31

ELECTROLUX

VACUUM

CLEANERS

SALES and SERVICE

JAMES COX

Ph. 428-2931 or 428-8221

Manchester

WANT ADS

WANTED—Children to care for in my home. Live on N. Lima Center Rd., Chelsea. Call 475-2194. 32

SEE US for transit mixed concrete. Klump Bros. Gravel Co. Phone Chelsea 475-2530, 4920 Loveland Rd., Grass Lake, Mich. x40ff

THORNTON

JUST REDUCED: COLONIAL — Near high school and junior high. 4 bedrooms, family room with fireplace, walkout basement with recreation room. A very liveable home. \$31,900.

MANCHESTER—Nicely renovated, 4 bedrooms, 2 baths. Lovely older home.

RANCH—Three bedroom, 2 baths, fireplace, recreation room, 2-car garage, nice yard with fruit trees. Close to elementary school.

4-BEDROOM COLONIAL—2 baths, full basement, two-car garage, blacktop drive. Excellent location. Priced at just \$28,500. FHA possible.

JUST TWO YEARS OLD—4-bedroom ranch, 1 full and 2 half baths, 2 fireplaces, family room, full basement with recreation room. Near Inverness golf course. Chelsea schools.

BUILDING SITES: 3 acres, 10 acres, 40 acres.

WANT ADS

SALE by owner—New 3-bedroom home, with walk-in basement, vinyl siding, lots more, come see. Phone (517) 861-8886. —x32

Chrysler Corp.

needs

Journeyman Painter and Glazier

Journeyman for industrial plant. Excellent working conditions and employee benefits.

Apply at

Chrysler Corp. Scio Plant

Personnel Dept., Zeeb Rd. or contact Jim Hafner, 662-6531, ext. 550

Equal Opportunity Employer x31

All Insurance Needs

In the convenience of your own home — or mine

N. H. Miles, Allstate

Call GR 5-8334 after 5 p.m. x5t

FOR SALE

HOUSES on 10 acres, live in one, rent the other.

6-ACRE FARM, 14-room house, small tenant house, barns and outbuildings.

Due to increased interest in our area, we need listings on all types of homes, farms and vacant land.

IF YOU WANT TO BUY OR SELL, CALL

JIM WILLIAMS

475-8320
Representing Mettly Real Estate
144 Ecorse Rd., Ypsilanti
Phone 484-1000 x31

FOR RENT — Small, 2-bedroom cottage in Chelsea area. \$125 per month, furnished. No children, no pets. 426-4663. x31

WORK WANTED — Girls will do house cleaning, office cleaning or any kind of odd jobs. Call 475-8243 or 475-8750. —33

WORK WANTED — Carpenter wants all remodeling work. Reasonable rates, satisfaction. Phone Gregory 498-2539. —41

FOR SALE — 18 lots. Phone any day except Saturday. 20337 Old US-12, Chelsea. Phone 475-8866. x18t

WANT ADS

FOR RENT—Two bedroom at Portage Lake. Stove, refrigerator, carpeted. No pets. \$100 damage deposit plus lease. Ph. 426-4396. —4

FRISINGER

CHELSEA—Executive ranch home on 15 acres. Too many extras to list. Professionally landscaped. Scenic view. 2 fireplaces, brick wall in living room.

18 ACRES—4-bedroom 1-year-old chalet style home, fireplace, balcony. Priced to sell.

GET READY for summer now! Year round home at Sugar Loaf Lake. Fireplace. Priced to sell at \$24,900.

2 ACRES—Lots of pine trees, near elementary school. Large family room with fireplace.

1 ACRE—Large, 3-bedroom ranch home, 2 fireplaces. Excellent condition. Priced to sell at \$43,500.

ANN ARBOR—2 immaculate 2-bedroom brick ranch homes, both on beautiful wooded lots. Priced for sale in the 30's. Dickens school area.

3-BEDROOM RANCH—Cathedral ceilings, large fenced yard. High assumable mortgage.

MANY FARMS to choose from: 4 acres, 40 acres, 158 acres.

LAND—76 acres. Priced to sell at \$33,000.

26 ACRES—Manchester schools. 40 acres Chelsea schools.

FRISINGER REALTORS

Chelsea 475-8681

Evenings
Paul Frisinger 475-2621
Herman Koenig 475-2613
Hope Bushnell 475-7180 x1t

FOR SALE—Inlaid vinyl and linoleum tile. Armstrong and Congoleum Narin. Installed by skilled craftsmen. Estimates, terms. Merkle Bros. phone 475-8621. x30t

IOE SKATES SHARPENED. Call after 5 p.m. GR 5-8877. —32

BABYSITTING in my home. Walking distance from South school. Have references. Phone 475-2943. x31

FREE—2 female puppies and mother dog, beagle and shepherd. Ph. 475-2816 after 4 p.m. x30t

FOR RENT—Apartment in duplex, new two-bedrooms, carpeting, stove, refrigerator, full basement recreation room. North of Chelsea on N. Territorial Rd. \$200. Available Feb. 1. Call 426-8787. x31

WANTED—Scrap material for doll clothes. Call 475-7989. —31

WANT ADS

XEROX COPIES made. Merkle Brothers. —41t

Marshall Realty

WATERLOO AREA — 3-bedroom home with living room, dining room, kitchen carpeted. Insulated and aluminum siding. Horse barn and garage combined. On 2 1/2 acres. Land contract.

3-BEDROOM FARM HOME in Pinckney area. With large barn, silos, and other out buildings on 10 acres. \$33,000 with \$6,000 down on land contract.

DEXTER SCHOOLS — 5-bedroom home with easement to Portage Lake. Needs some finishing and redecorating. Insulated and natural gas heat. \$17,500 on land contract, with low down payment.

LARGE SELECTION of vacant land in 5, 10 or more acres, in Chelsea, Dexter, Pinckney area.

GET READY for spring now. Let us show you what we have. We have buyers waiting for homes in this area. Call us to discuss your plans for selling.

Marshall Realty

440 Dexter Rd., Pinckney, Mich. 878-3182
Evelyn, 475-8583; Joanne, 475-7493 and Dave 475-7275. x31

FREE PUPPIES—5 lively puppies to give away to good homes. Cross between German Shepherd and Border Collie. 6 weeks old. Phone 475-7791. x31

TIES BY COELIUS—Now on display at the Tailfeather Boutique Shoppe, 105 N. Main. Only \$4.50. x31

WORKING GIRL would like ride to and from work at U of M Administration Building at Hoover and Green Sts. Hours, 8 til 5. Would share expenses. Call 475-8550. x31

EARN MONEY MEETING PEOPLE, making friends, helping others like yourself! Avon Sales Representatives get a warm welcome, live busy and profitable lives. Call: 263-2738 or write 3604 Midlandbury Ct., Lambertville, Mich. 48144. x33

SNOWMOBILE PROBLEMS? I service all makes. Tom Coy, 426-3359. —x31

HELP WANTED—Sales work for females, with ability to communicate with people. Call collect between 9 a.m. and 5 p.m. (517) 726-0109. —32

PARTIALLY WOODED ACRES for sale, at the end of Kernwood, just \$13,250. Phone 278-7182 Dearborn. —32

FRYE WESTERN BOOTS—Ladies size 8-C. Brown, like new. \$15. 475-2551. —x31

WANT ADS

WANTED—Someone interested in contracting for janitorial and grounds maintenance your around for Chelsea office. Write Box 9A-20, care of Chelsea Standard, Chelsea, Mich. —x32

BABYSITTING — Full- or part-time for your child in my home, weekdays. 475-7418. —38

FOX TRAC SNOWMOBILES — 20 h.p. Futura, \$495. 20 h.p. Centura, \$549. Tom Coy, Sales and Service. I service all makes. 426-3559. —x32

FIREPLACE WOOD — Quality hardwood, \$20 a cord, \$27 delivered and stacked. Call 475-4792. 31

FOR SALE — 1968 Chev Nova 6-cyl., standard transmission, good condition. Ph. 475-5871 after 5 p.m. x31

FREE PUPPIES — "Samadors" — Samoyed and Labrador, 6 weeks old, born and raised outdoors. Male and female. Phone Ed Brown, 475-7674. —31

CARD OF THANKS

We would like to thank all the wonderful people who did so much for us during the recent illness and death of our dear and beloved husband and father. Very special thanks to Dr. Waldyke, Dr. Papo, all the staff at Community hospital, the boys and Juanita at the clinic. I'll never forget the kindness of Rockwell Standard and special thanks to all my neighbors and the girls at Rockwell. Special thanks to Ann Bumpus and Laurie White and all those who helped them care for our family and friends. Thanks to the Rev. Siebert for his comforting words. From our hearts, thanks to everyone who came. We will always remember the kindness of our friends and neighbors.

Mrs. Harry Cotterman and Gina.
Michael Cotterman and family.
Harry David Cotterman and family.
Charles Cotterman and family.
Donna Taylor and family.

CARD OF THANKS

Williams, Janet E.—We wish to thank all our kind friends and neighbors, pallbearers, Theford Corporation and fellow workers, C. J. Burden and son of St. Clement's Chapel and the Rev. Dale Oliver for their many acts of kindness, expressions of sympathy, condolence and beautiful floral offerings during the recent bereavement in the loss of our beloved mother, daughter, and sister.

Audrey and Albert Williams
Mr. and Mrs. John Lotridge
Mr. and Mrs. Larry Lotridge and family.
Mr. and Mrs. Warren Paddock and family.



NOMINATED: Martin Straub, son of the Gerald Straubs on Madden Rd., has been nominated by Congressman Marvin Esch for the Air Force Academy in Colorado. He lives on the Dexter-Chelsea school district line, and is a senior at Chelsea High. He expects to learn whether or not his nomination has led to an appointment some time near May 1. He flies now, working on his private license, and looks forward to being picked for the Air Force Academy. He is a member of Faith Lutheran church, Dexter.

Thought For Food

Peanut butter must contain at least 90 percent peanut butter. It can have any more than 10 percent of such additives as salt, dextrose, and stabilizers.

Before the Civil War, the American farmer produced food and fiber to feed and clothe himself and three other persons; by the beginning of World War II that figure had jumped to the farmer and 42 other persons; today it's the farmer and 42 other persons. This substantial decrease in rural labor releases the majority of our population to work in other jobs in this country's current urban-centered technological economy.

Wrestlers Pin Parma...

(Continued from page one)

pound bracket. At 155 pounds, Daryl West scored a 150 decision. Jon Scherk, wrestling at 167 pounds, then scored a 7-1 decision. Dave Hess brought the score to 24-22 by scoring a decision at 185 pounds. Steve Worden completed the comeback by pinning his opponent at 124.

The victory was a fine team effort and Coach Richard Bareis indicated that having the heavier weights carry more of the point scoring is an advantage since it will be needed in the heavy schedule for the remaining matches.

Senator Bursley...

(Continued from page three)

ale even remotely similar to that seen in California, Minnesota and Texas, it too would fall before the equal protection clause of the 14th Amendment!

THANK YOU

We would like to thank everyone who was so kind to us in every way when Don was in the hospital and since his return home, especially over the holidays.

Barbara and Don Beeman.

Fun is somewhat like life insurance. The older you get the more it costs.

YES

WE ARE MAKING LONG-TERM FARM REAL ESTATE LOANS

SEE US

Federal LAND BANK Association

P. O. Box 1006
Ph. 769-2411 3645 Jackson Rd.
Ann Arbor, Mich. 48103

IN BUSINESS SINCE

1946

OPEN EVERY DAY
INCLUDING HOLIDAYS
until 9:30 p.m.

Miller's grocery & service

11453 Jackson Rd.

at Lima Center

PHONE 475-1202

Township Clerks

Reinstating Lapsed Voter Registrations

Area township clerks have received word that voting registrations which were to have been cancelled at the end of two years if the registrant has not voted must now be returned to the active files because of an injunction served following a petition to stop action by the Michigan Department of State.

Until the matter is settled all governments must return such registrations to their files and revert to the old arrangement whereby registrations were valid up to four years if the party had not voted. At present clerks are busy putting back what they had just sorted out, until a ruling is received.

BOWLING

Tri-City Mixed League

Standings as of Jan. 14

	W	L
Four Mobil	49	23
3-D Sales & Service	42 1/2	29 1/2
Wolverine Tail & Small	39 1/2	32 1/2
Jiffy Market	39	33
Trail Blazers	39 1/2	33 1/2
Jiffy Mixes	39 1/2	33 1/2
Chelsea Cleaners	37 1/2	34 1/2
Smith's Service	32	40
Sprague Buick & Olds	31	41
Heydauff's Appliances	29 1/2	42 1/2
4-W's	28	44
Stivers	27	45
500 series, men: C. Dettling, 506; D. Dettling, 538; W. Griffith, 538; C. Miller, 519; A. Peterson, 516; A. Sannes, 514; J. Stoffer, 508; T. Wisniewski, 570; R. V. Worden, 514.		
200 games, men: W. Griffith, 200; A. Peterson, 215.		
450 series, women: C. Dettling, 531; B. Pike, 479; C. Peterson, 458.		
150 games, women: M. Ashmore, 151; G. Dettling, 177, 183, 161; B. Pike, 161, 174; R. Harok, 177; B. Kunzelman, 166; N. Miller, 165; B. Parish, 159; C. Peterson, 191; M. Weston, 159.		

Chelsea Lanes Mixed

Standings as of Jan. 14

	W	L
A.A. Centerless	76	43
Morgan & Turner	70	40
Meabon's	66	53
Marsh & Eder	64	55
The Pub	63	56
Chelsea Lanes	62	57
Barkley & Gephart	60	59
Boltinger Sanitation	57	62
Heim & Harrington	56	63
Fitzsimmons Excavating	53	66
Sable's Collision	44	75
Jarvis & Gottra	43	76
Women, 150 games: L. Gilmore, 189; L. Alexander, 182; H. Morgan, 169; A. Turner, 168, 163; F. Gephart, 161, 163; B. Smith, 160, 153; L. Jarvis, 158; D. Cozzens, 150.		
Women, 450 series: F. Gephart, 409; L. Alexander, 464; B. Smith, 458.		
Men, 125 games: F. Barkley, 217; J. Turner, 200; A. Keizer, 199; M. Packard, 190, 183; L. Keizer, 184, 183; L. Gephart, 186; F. Blackwell, 183; R. Morgan, 182; D. Eder, 183; D. Alexander, 181; G. Arrington, 175.		
Men, 474 series: L. Keizer, 597; M. Packard, 534; A. Keizer, 529; D. Eder, 501; F. Barkley, 500; L. Gephart, 500; J. Turner, 499; J. Trapp, 488; G. Arrington, 482; R. Bauer, 481.		

Charlie Brown & Snoopy's Friends Prep Division

Standings as of Jan. 15

	W	L
Good Guys	38 1/2	12 1/2
Pin Fighters	34	17
Bearcats	33	18
Strikers	27	21
Pros'	24 1/2	26 1/2
Fantastic 5	24	27
Mustangs	19	32
Bullpups	17	34
Games 100 and over: D. Aldrich, 102; C. Sannes, 141, 136; D. Craft, 128, 129; J. Alexander, 128; M. Schnaidt, 111; A. Houle, 108; J. Boyer, 143, 145; M. Foster, 102, 133; B. McGibney, 111; J. Burnett, 138; D. Alexander, 115; C. Umstead, 106, 111; J. Marsh, 110; J. Sweet, 105, 133; D. Thompson, 116, 118; G. Packard, 104, 119; M. Waldyke, 114; B. Kalishek, 101, 113; A. Kalishek, 109; B. Lovely, 110; M. Dickens, 102; S. Fahrner, 122; C. Collins, 143.		
Series over 200: C. Sannes, 277; D. Craft, 257; J. Alexander, 202; D. Alexander, 214; J. Boyer, 288; M. Foster, 235; D. Thompson, 234; G. Packard, 223; M. Waldyke, 204; C. Umstead, 217; J. Marsh, 205; J. Sweet, 238; S. Fahrner, 214; C. Collins, 224; B. Kalishek, 214.		

from HISTORY'S SCRAPBOOK
DATES AND EVENTS FROM YESTERYEARS

Carrie Nation started her campaign by swinging a hatchet on a Wichita, Kansas saloon, January 21, 1907.
Cleopatra's Needle was brought to New York City, January 22, 1881.
John Hancock was born, January 23, 1737.
January 24, 1946, contact was made with the moon by radar.
The first Trans-U.S. telephone call was made from San Francisco to New York City, January 25, 1915.
Virginia was re-admitted to the Union, January 26, 1870.
January 27, 1944, Leningrad was cleared of the Nazi army.

TODAY'S THOUGHT

By LOUIS BURGHARDT

Church people know the Book of Psalms was written to be sung. The Book of Psalms was actually the hymn book of Solomon's Temple. In singing the Psalms people spoke to God "in song." People today still talk to God "in song." Many of our church hymns were undoubtedly inspired by what was written in Psalms.

Can you imagine a church service without song? Can you imagine anyone having no reason to sing His praises, to bless His name? Church songs bring us to closer relationship with God, And with one another.

Speaking to God in song during Sunday worship is fine. Wonderful. But, what about the rest of the week? What sort of singing do you hear? Fact is, don't we hear much more singing of the blues than Hallelujah? We wonder how many fewer pep pills, tranquilizers and the like would be bought if more people sang songs such as "O Love that will not let me go" ... One thing is certain. There can be no harm in trying it! ... BURGHARDT FUNERAL HOME, 214 East Middle St., Chelsea, Mich. Phone GR 5-4141.

—SPECIALS—

MILLER'S VANILLA

Ice Cream, 1 gal. pkg. \$1.29

GRADE A LARGE

Eggs doz. 42c

ECKRICH

Roasted Sausage . . lb. 85c

200 COUNT PKG.

Kleenex 2 for 51c

KEYKO

Margarine 3 lbs. 76c

KUSTERER'S
FOOD MARKET

DIAL 475-2721 WE DELIVER

CONSOLIDATED REPORT OF CONDITION OF

Chelsea State Bank

of Chelsea, Michigan, at the close of business December 31, 1971, a state banking institution organized and operating under the banking laws of this State and a member of the Federal Reserve System. Published in accordance with a call made by the State Banking Authorities and by the Federal Reserve Bank of this District.

	Dollars	Cts.
Cash and due from banks (including no unposted debits)	\$1,512,829.02	
U. S. Treasury securities	4,575,212.21	
Obligations of other U. S. Government agencies and corporations	199,875.00	
Obligations of States and political subdivisions	2,652,613.32	
Other securities (including \$36,000.00 corporate stocks)	59,350.00	
Federal funds sold and securities purchased under agreements to resell	300,000.00	
Other loans	12,229,448.97	
Bank premises, furniture and fixtures, and other assets representing bank premises	322,627.18	
TOTAL ASSETS	\$21,852,053.70	
	LIABILITIES	
Demand deposits of individuals, partnerships, and corporations	\$4,359,399.33	
Time and savings deposits of individuals, partnerships, and corporations	13,751,975.26	
Deposits of United States Government	119,277.41	
Deposits of States and political subdivisions	1,051,605.81	
Certified and officers' checks, etc.	164,010.21	
TOTAL DEPOSITS	\$19,410,268.02	
(a) Total demand deposits	5,378,292.76	
(b) Total time and savings deposits	14,031,975.26	
Other liabilities	418,479.44	
TOTAL LIABILITIES	\$19,828,747.46	
	RESERVES ON LOANS AND SECURITIES	
Reserve for bad debt losses on loans (set up pursuant to IRS rulings)	\$180,784.20	
TOTAL RESERVES ON LOANS AND SECURITIES	\$180,784.20	
	CAPITAL ACCOUNTS	
Equity capital, total	\$1,842,522.04	
Common stock—total par value	400,000.00	
(No. shares authorized)	8,000	
(No. shares outstanding)	8,000	
Surplus	800,000.00	
Undivided profits	542,522.04	
Reserve for contingencies and other capital reserves	100,000.00	
TOTAL CAPITAL ACCOUNTS	\$1,842,522.04	
	TOTAL LIABILITIES, RESERVES, AND CAPITAL ACCOUNTS	
	\$21,852,053.70	

MEMORANDA

Average of total deposits for the 15 calendar days ending with call date \$19,565,648.47
Average of total loans for the 15 calendar days ending with call date 12,188,136.89
Deposits of the State of Michigan 16,266.63
I, Paul G. Schaible, Jr., Vice President & Cashier of the above-named bank, do hereby declare

Community Calendar

Chelsea Junior Achievement's JAPCO, will have an open house Jan. 25, 6-9 p.m. at Beach Middle school woodworking and metal shop. Call 475-4061 for more information.

Cub Scout Pack 445 Monday, Jan. 25, Beach school cafeteria, 7:30 p.m.

Wolverine Farm Bureau, Jan. 25, 8 p.m. at home of Alvin Jed. etc. 43175 North Territorial.

VPW Auxiliary, 6th District meeting, Jackson, Jan. 23 at Post Home 823. Those planning to attend contact Geraldine Klink.

Olive Lodge, F&AM, annual banquet Jan. 22 at 7 p.m. at St. Paul United Church of Christ. Those planning to attend should make reservations by Jan. 20 with Dan Dancer at 475-7683.

Annual January shindig sponsored by Young Farmers Planning Committee, Washtenaw County Farm Bureau, Jan. 22, 9 p.m. to 1 a.m., Freedom Township Hall, Pleasant Lake Rd. Donation, \$1 per person. Square dancing, door prizes and refreshments.

Senior Citizens birthday party Jan. 20, 6:30 p.m. Pot-luck dinner. Committee: Mark Kniss, Minnie Lesser, Mrs. Florence Merkel.

American Legion and Auxiliary hospital equipment available by contacting Don O'Dell at 475-8249.

Inquiries regarding the Chelsea blood bank may be directed to Harold Jones in the event that Mrs. Dudley Holmes is unavailable, or to Mrs. Pauline McKenna, American Red Cross in Ann Arbor, 971-5300.

Esther Chapter of the Congregational church, 8:00 p.m. Thursday, Jan. 20 at the home of Mrs. Martin Steinbach.

North Sharon Church Plans Homecoming

North Sharon Bible church will hold its annual Homecoming Day Jan. 23.

Pictures dating back to 1933 will be on display, along with a communion set nearly 100 years old and other artifacts of the church's history.

The church building was erected about 1883 by the German Lutherans. It was closed from 1916 to 1931 when it was reopened as a community church under the leadership of the Rev. F. R. Walker and Albert Gardner, both of Grass Lake.

Today the Rev. William D. Enslin serves 68 members and approximately 100 Sunday school pupils. He is the first full-time pastor in the church's history.

Former pastors and members of the church are especially invited to attend the homecoming, and those unable to attend are asked to send a letter of greeting to be read or displayed.

Everyone needs variety in foods to make interesting and nutritionally well balanced meals. Include milk, meat, fruits and vegetables, and breads and cereals daily for this variety.

BIRTHS

A son, Kyle Brandon, to Mr. and Mrs. Max E. Plank, 1237 N. Freer, Chelsea.

A son, Shayne, to Mr. and Mrs. Gary Miles, Manchester. Paternal grandparents are Mr. and Mrs. N. H. Miles, Chelsea.

A daughter, Brandi Kay, Jan. 16, to Mr. and Mrs. Richard Groves of Marion. Maternal grandparents are Mr. and Mrs. David Wians. Paternal grandparents are Mr. and Mrs. Elwood Groves of Marion.

ADOPTION NOTICE

Frank and Jeannene White announce the adoption of a daughter, Dwana Jean, Jan. 12. Maternal grandparents are Mr. and Mrs. Duane Rowe. Paternal grandparents are Mr. and Mrs. Kenneth Platt of Wabeno.

Family Room Lurking in Your Basement?

Maybe Chelsea Lumber Can Help You Find It!

★ Armstrong SUSPENDED CEILINGS

From **29¢** Sq. Ft.

★ Pre-Finished PANELING

From **\$2.69** 4x7 SHEET

★ CARPET SQUARES SELF-ADHERING

—SHORT NAP 100% ACRYLIC **59¢** 12 x 12

—SHAG 100% NYLON **39¢** 12 x 12

Compare the Quality — Compare!

★ BAR CABINETS, Bar Tops

Remember — \$1 in Materials Adds \$4 to the Value of Your Home!

Shop the "Friendly One"

Chelsea Lumber



JAYCEE WEEK PROCLAIMED: A. E. Fuks (center), village president, signs the proclamation left, and Jaycee Week chairman is Allen Johnson.

Letters to the Editor

Dear Sir,

"Fools rush in where angels fear to tread" . . . I don't know if I'm contributing to the chaos because of the former, or because I have been a participant (and continue to be a believer) in civil disobedience, or because I'm a public school teacher. My hope is that my suggestion transcends my bias and that it will contribute toward building a school; a school that is responsive to all who are a part of it (students, teachers, administrators, and community) and that all can be proud to be associated with.

Any discussion whose purpose is trying to establish a right and wrong party is not only meaningless but anti-productive. The administration acted within its legal powers and the students did what students have always been capable of doing the difference being that these students were also willing to suffer the consequences of their action.

Productive discussion will be aimed at alleviating the causes of confrontations from which there are no winners, only losers. It will be said that personalities are the main contributors but I disagree. Personalities, students and administrators, are being focused on because they are forced to act within (or without) the confines of a decision making procedure that is clearly inadequate.

I can't believe that anyone who is affected by it can think that it is fair. Who would want the position of the administration who doesn't become involved with a decision unless they have to veto it? Who would want the position of the students who know that every decision they make is subject to veto? Least of all, who would want the part of the teachers or community who's only role in the decision making procedure is through influence?

It is both sad and ironic that the institution (the school) that is primarily assigned by our state and nation to enhance democracy is operated in an undemocratic manner! There are just a small number of schools operating in a democratic way, fewer that are doing it successfully.

Okemos High school's all-school council is made up of teachers, ad-

ministrators, school board member, and students. It is working well, but it took a year of research, preparation and giving to establish it. The best manner for decisions to be made at Chelsea High school is best determined by those who are CHS. The quest for that procedure should be started immediately, with input from all segments of the school and with the understanding that it will take time.

If the cause of the recent confrontation isn't alleviated the future is depressingly predictable. Good Luck.

David P. Winans, CHS '64.

Karate Class Offered Here By Recreation Comm.

Instruction in the ancient foot-fist art of self-defense, Tae Kwon Do karate, will be offered to Chelsea area residents beginning Feb. 1.

Sponsored by the Chelsea Recreation Commission, the class will be taught by master instructor James C. B. Yu, a fourth degree Korean blackbelt.

Tae Kwon Do is a form of unarmed self-defense and uses every part of the body to help promote a high degree of physical fitness. The ultimate goal of this type of karate is the development of the character of the participants.

The course will be offered Tuesday from 7 to 9 p.m., at North Elementary school. Potential participants are asked to call Ken Larson, 475-2650, for registration information.

Even a new broom won't sweep clean unless someone uses it.

Jaycee Auxiliary Sponsoring Book Drive for Prison

Chelsea Jaycee Auxiliary, in conjunction with auxiliaries all over Michigan, is sponsoring a paperback book drive for the Southern Michigan Prison library in Jackson.

The book drive is in response to a request from the Jaycee chapter at the prison.

Books written in English or Spanish can be used at the library. They will be delivered to the prison and sorted and catalogued according to the nature of the book.

The Jaycee Auxiliary reminds Chelsea residents that books donated to the drive can be read by thousands of inmates before they are discarded, but only by several people if they remain unused in your home. A drop-box will be in Dancer's window for the convenience of those wishing to contribute to the project.

For further information, contact project chairman Mrs. Robert Updegraff, 475-7481.

Ann Travis Cited for Academic Achievement At Olivet College

Ann Travis, daughter of Mr. and Mrs. William B. Travis, 15 Sycamore Dr., has been named to the Academic Achievement List at Olivet College. To qualify for the list, a student must earn a 3.50 grade point average on a 4.0 scale.

Miss Travis is active in the Foronian sorority and is an assistant head resident of a residence hall, Shepherd Hall.

She majors in psychology and minors in business.

Miss Travis is a 1970 graduate of Chelsea High school.

FRENCH LESSON

Fondue comes from the French verb "fondre," to melt.

DEATHS

John P. Dillon

Half Moon Lake Resident Dies at Chelsea Hospital

John P. Dillon, 63, 14361 Edgewater, Dr., Half Moon Lake, died Jan. 15 at Chelsea Community Hospital after a long illness.

Born May 7, 1908, in Toronto, Canada, he was the son of James and Maude (Sturly) Dillon. He married Florence Vorpapel May 24, 1947 and she survives.

Mr. Dillon was a Half Moon Lake resident for 15 years. He was employed by the Ann Arbor Post Office for 30 years and was president of the Ann Arbor Postal Clerks' Local No. 283 for the past 10 years. He was also vice-president of the Michigan Federated Postal Clerks, Second District. He served in the U.S. Army during World War II in the European theater with the 54th Armored Infantry Battalion. Mr. Dillon was a member of St. Mary Catholic church of Chelsea.

Surviving, in addition to his widow, is a son, Michael, and a daughter, Mona, both at home; a brother, James Dillon, Scarborough, Canada; two sisters, Mrs. Louis (Mona) Smith, Willowdale, Canada, and Mrs. Leo (Muriel) Mahoney, Royal Oak, and several nieces and nephews.

Funeral services were Jan. 18 at St. Mary church with the Rev. Fr. Francis B. Wahowiak officiating. Burial was in Mt. Olivet Cemetery. Arrangements were by Burghardt Funeral Home.

JV Cagers Rally To Win Over S. Lyon

It was another close one for the Bullpups Friday at South Lyon, but the Chelsea squad managed to pull it out in the last half to hand the Lions a 57-51 defeat.

Chelsea scored 12 points in the first quarter to South Lyon's 14, and found themselves behind, 27-34, at the end of the first half. Better defensive playing and more hustling, especially on the boards, gave the Bullpups the drive they needed in the second half. Sparked by Tim Treado's 23 points and 13 rebounds, Chelsea outscored the Lions by 10 in the second half to emerge with the win.

Treado played his best game of the season with his scoring and rebounding, plus six steals. Jeff Sprague sank 10 points, Ron Kiel eight and Marvin Guster six. Guster also grabbed 11 rebounds, Kiel 10 and Larry Garlick six.

The Bullpups now have a 5-2 record and will travel to Jackson Northwest tonight (Thursday).

U-M Athletes Coming . . .

(Continued from page one)

meal, films will be shown of 1971 U. of M. football.

Tickets are available from any Chelsea High school baseball team member, and all proceeds will go to the Chelsea High School Baseball Clinic Fund to help finance the spring baseball camp.

Honeybees last year scored a record crop of 283 million pounds of honey.

Wrestler of the Week



ROD BRANHAM, senior, wrestles heavyweight for the Bullpups. This is his second year as a varsity matman. He enjoys motorcycling and auto mechanics. Rod works part-time and plans to travel after graduation. He is the son of Mr. and Mrs. James Branham, 4428 E. Cedar Dr.

Winter Recreation Program

Week of Mon., Jan. 24 through Sat., Jan. 29

MONDAY—8:00-10:00 p.m.—Ladies conditioning at Chelsea High school.

TUESDAY—6:30-8:30 p.m.—Men's basketball at Beach Junior High.

THURSDAY—6:30-8:00 p.m.—Beginning tennis at Beach Junior High.

8:00-9:30 p.m.—Advanced tennis at Beach Junior High.

SATURDAY—9:00-11:00 a.m.—Boy's basketball, 2nd through 6th grade, at Beach Junior High.

9:00-11:00 a.m.—Girl's gymnastics and games, at Beach Junior High.

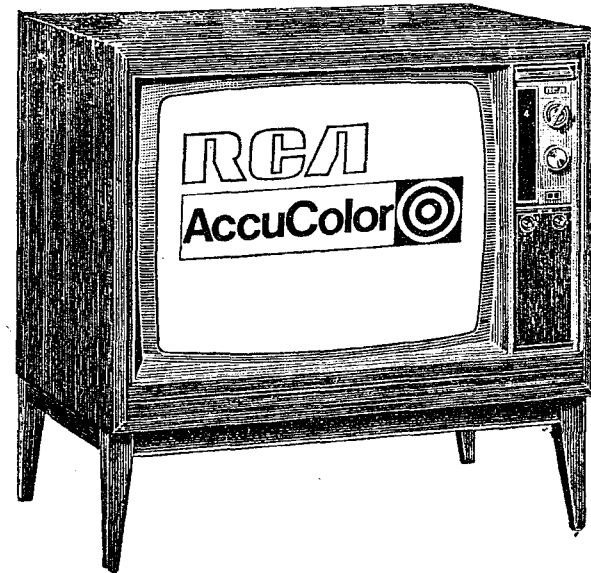
DEFINITION

A cold can be either positive or negative. It depends. Sometimes the eyes have it, other times the nose.

PAVING MATERIALS

Among the paving materials most commonly used in this country are concrete and good intentions.

RCA Giant-screen AccuColor



Looks like a console.
Works like a console.
Priced like a table model.

\$529⁹⁵ with stand
Reg. \$599.95

Here's fabulous RCA AccuColor with a surprisingly affordable price. Panoramic 25" diagonal screen size in a table model cabinet comes with its own base for instant conversion to the console look. AccuColor brings you brilliant, lifelike colors; consistent, dependable performance; fiddle-free automatic tuning. Come see it.

GAMBLES

110 N. Main St.

Ph. 475-7472

JANUARY DISCOUNTS

All Records & Tape in Stock Now 25% Off

REGULAR 69¢

PRO TUFTED TOOTHBRUSH . Now 29¢

REGULAR 59¢

WEBSTER DICTIONARIES . . . Now 29¢

REGULAR 49¢

RULED WRITING TABLETS . . Now 29¢

- DIET CENTER -

DIET CANDY

Reg. \$2.49

Now **\$1.99**

SLIM MINT

Modern aid to diet control.

Reg. \$1.98

Now **\$1.49**

SPECIAL CLOSE-OUT, REGULAR \$3.33

BED SPREADS . . Now **\$1.98**

CHECK Our Special Close-Outs on Radios & Watches

BUDGET-WISE STORE

Chelsea's First Discount Store

116 South Main Street

Phone GR 9-1611



In case of fire do you have "ready money" to rebuild? Better get

Auto-Owners

Fire

Insurance

See your A-D Man

A. D. MAYER AGENCY, INC.

"Your Protection Is Our Business"

115 Park St. Chelsea

Phone 479-5061

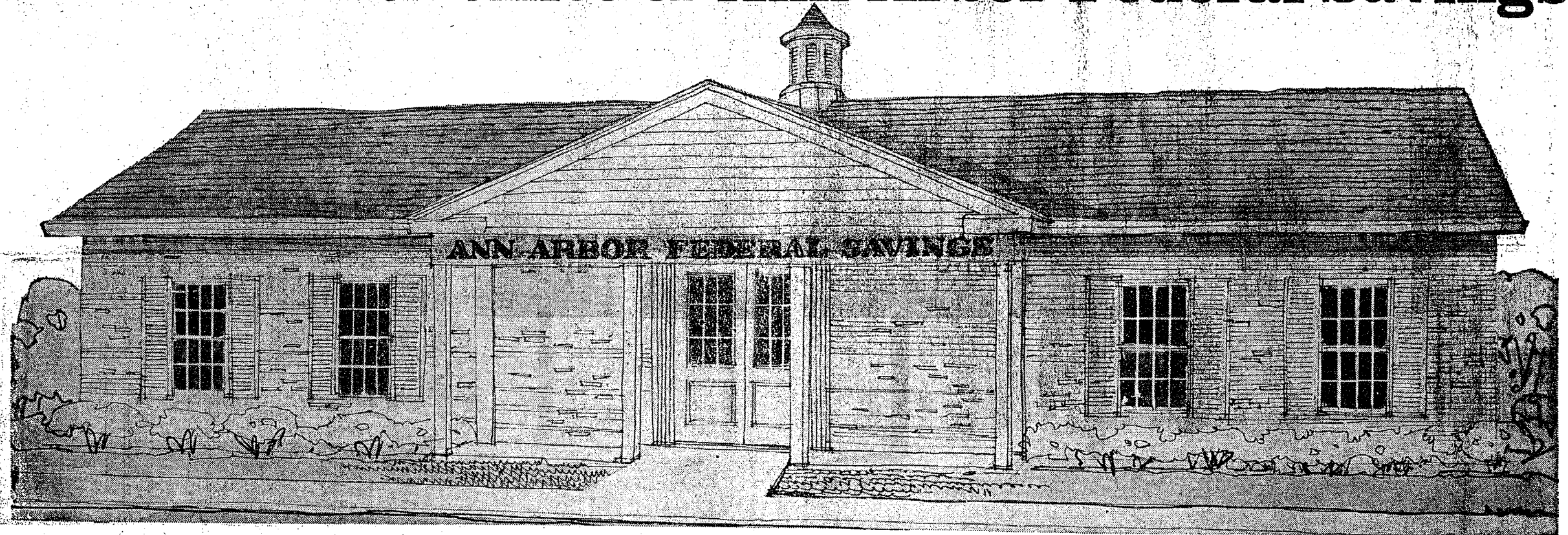
Auto-Owners

INSURANCE COMPANY

Home office at Lansing, Michigan

you are invited to

GRAND OPENING TIME at the Chelsea office of Ann Arbor Federal Savings



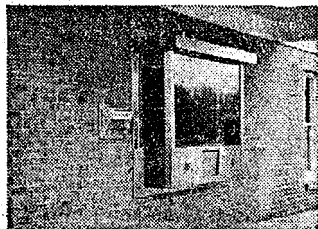
MON. TUE. WED. THURS. FRI.

JANUARY 24 THROUGH 28

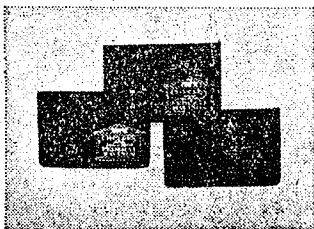
Come meet your new neighbor during Grand Opening Time. See historic photographic exhibits; see the latest in electronic equipment, see the many convenience facilities and devices. Find out how you can get higher interest earnings on your savings, ample funds for home building and remodeling, and warm personal service. Refreshments, prizes and gifts for everyone.



FREE dry chemical fire extinguisher with Exclusive Pressure Check. Pressure Check lets you know if your extinguisher is charged and ready for use. You simply push a button and if it returns your fire extinguisher is pressurized and ready for action. It is nontoxic, won't freeze, and comes with bracket for wall mounting. **FREE** when you open a new savings account or add to an existing account with \$500 or more.



SEE the many convenience facilities: the drive-up window for making deposits, cashing checks, purchasing travelers checks and other daily services; the special black safety light that allows only you to make withdrawals from your account; the latest electronic equipment.



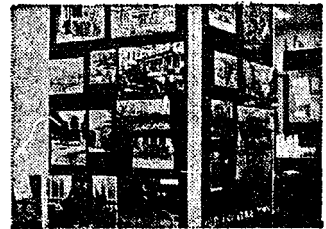
WIN a \$25, \$50, or even a \$100 savings account. Bring your invitation to Grand Opening with you. Have a teller put it under the black light. The black light will reveal a hidden message and tell you whether or not you have won a valuable savings account.



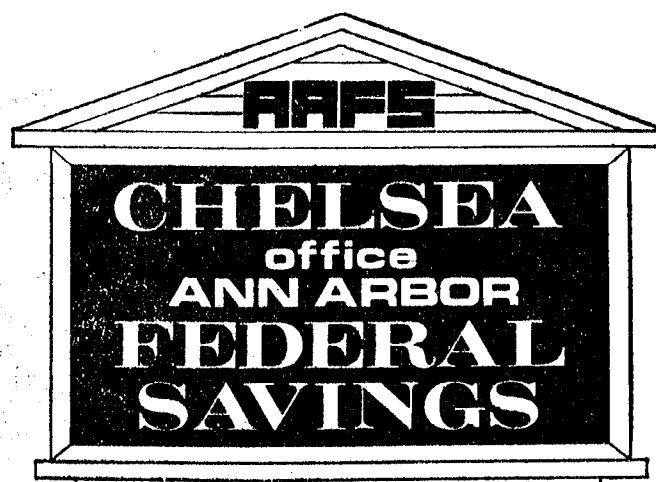
FREE balloons for the children, Hawaiian Vanda Orchids for the ladies and for everyone the famous and fun Farmer's Almanac. There will also be refreshments. Come help us celebrate.



FREE booklet containing photographs of early Chelsea. These are the same photographs which have been used in the permanent display. This is a priceless historical collection and will be a collector's item. **FREE** when you open a new savings account or add to any existing account with \$50 or more. Be sure to get a copy for your family.



SEE historic photo displays. We have collected over 150 photographs of early days in Chelsea and have mounted them in a permanent display. This significant display, which we have created as a gift to Chelsea, will be placed in the custody of the McKune Memorial Library and will be made available to schools and other civic organizations in the area.



M52 and Old US12

Member: Federal Loan Bank System • Federal Savings and Loan Insurance Corporation

CQE Seeks Improvements in Local Education

Citizens concerned about the educational community of Chelsea is that the Citizens for Quality Education is all about.

Organized in June, 1969, the group has four objectives: to provide for citizen involvement in Chelsea schools and assist the board of education in fulfilling its obligations; advise and assist the board and school systems staff on matters of operation and function; including the improvement of education; provide an organized

means for citizens to voice their concerns regarding public education in the school system and the state; and develop programs available to all citizens through the community use of school facilities.

CQE was initially formed in response to some citizens' efforts to urge voter approval of increased school mileage. Later, the group broadened its goals to include other aspects of community education. Presently, CQE is compiling a

directory that will be available to the community, listing organizations, speakers and any other resource that could be useful in bettering educational quality. CQE meets once a month from 8 to 9:30 p.m. in the high school library. More information may be obtained by contacting Jay Hopkins, president, or Mrs. Robert Robbins, secretary.

Telephone Your Club News
To GR 5-3581.

Camera Club Elects

Officers for the Chelsea Camera Club were elected at the Tuesday night meeting in Sylvan Town Hall. 1972 officers are: Frank Merriam, president; Chester Keizer, vice-president; Marion Longworth, secretary-treasurer.

Program was presented by Richard Sooy. "The High Country" took the group on a film journey through Bryce Canyon and Yellowstone national parks, ending in the Grand Teton national park.

February's program will be presented by Marion Longworth.

Donkey Basketball Returning

American's craziest and most unpredictable sport—donkey basketball—will be featured at the Chelsea High school gym Feb. 6 at 7:30 p.m.

The Chelsea faculty will compete against a combined team of wrestlers and baseball players—and both teams will be contending with the donkeys.

The animals are provided by Shaw Bros., complete with their combination of circus atmosphere and rodeo thrills.

Donkey basketball is a bit different from the common variety—each shot must be taken while the player is sitting on the donkey. The problems come in when the donkey decides to go away from the basket or is tired of all that weight on his (or her) back.

Advance tickets for this unusual event are available from all Chelsea schools and Strieter's Men's Wear. Proceeds will help finance the baseball clinic and wrestling mat.

The Chelsea Standard, Thursday, January 20, 1972 9

Hosting Career Information Meet

Attention young men and women, between 14 and 18 who are interested in a medical field career!


The Chelsea Medical Center is interested in all young people who want to learn more about medicine, pharmacy, veterinary medicine, and biological research.

The Medical Center, Chelsea Community Hospital along with the young adults, will plan exciting tours of research facilities,

learn about and operate special equipment and job opportunities for high school students interested in the medical field.

Come to the first meeting at the Chelsea Medical Center dining room, 775 S. Main, at 7:30 p.m., Thursday, Jan. 27. Dr. William Hawks will be the host for the meeting.

Telephone Your Club News
To GR 5-3581.



1101 M-52 CHELSEA

(formerly Stop and Shop)

Open Daily 9 a.m. to 9 p.m., Sundays 10 to 5

SEALTEST VITALURE

2% MILK . . . 1/2 Gal. Ctns.	89¢
BORDEN'S OLD FASHION FRENCH VANILLA	
ICE CREAM . . . 1/2 Gal.	69¢
ASSORTED BANQUET FROZEN	
SUPPERS . . . 2-Lb. Pkg.	99¢
KRAFT PARKAY	
MARGARINE . . . 3 1-Lb. Ctns.	\$1.00

CLIP & SAVE

SAVE 14c WITH COUPON
G & W BEET

SUGAR

5-Lb. Bag **49¢**

And additional purchase of non-coupon items of \$7.00 excluding beer, wine or cigarettes. Lesser Amounts at Regular Price. LIMIT 1 EXPIRES JAN. 22 1972



CLIP & SAVE

SAVE 22c WITH COUPON

TIDE DETERGENT

49-Oz. Box **59¢**

And additional purchase of non-coupon items of \$7.00 excluding beer, wine or cigarettes. Lesser Amounts at Regular Price. LIMIT 1 EXPIRES JAN. 22 1972



CLIP & SAVE

SAVE 33c WITH COUPON

INSTANT COFFEE

10-Oz. Jar **\$1.09**

And additional purchase of non-coupon items of \$7.00 excluding beer, wine or cigarettes. Lesser Amounts at Regular Price. LIMIT 1 EXPIRES JAN. 22 1972




CLIP & SAVE

SAVE 10c WITH COUPON

SUNSHINE KRISPY CRACKERS

16-Oz. Box **29¢**

And additional purchase of non-coupon items of \$7.00 excluding beer, wine or cigarettes. Lesser Amounts at Regular Price. LIMIT 1 EXPIRES JAN. 22 1972



CLIP & SAVE

SAVE 26c WITH COUPON

Glad TRASH CAN LINERS

10-Ct. Pkg. **53¢**

And additional purchase of non-coupon items of \$7.00 excluding beer, wine or cigarettes. Lesser Amounts at Regular Price. LIMIT 1 EXPIRES JAN. 22 1972



CLIP & SAVE

SAVE 8c WITH COUPON

PILLSBURY EXTRA LIGHT PANCAKE MIX

Box **39¢**

And additional purchase of non-coupon items of \$7.00 excluding beer, wine or cigarettes. Lesser Amounts at Regular Price. LIMIT 1 EXPIRES JAN. 22 1972



G & W BEET

SUGAR	5-Lb. Bag	49¢
------------------------	-----------	------------

DETERGENT

TIDE	49 Oz. Box	59¢
-----------------------	------------	------------

NESCAFE INSTANT

COFFEE	10 Oz. Jar	\$1.09
-------------------------	------------	---------------

SUNSHINE KRISPY

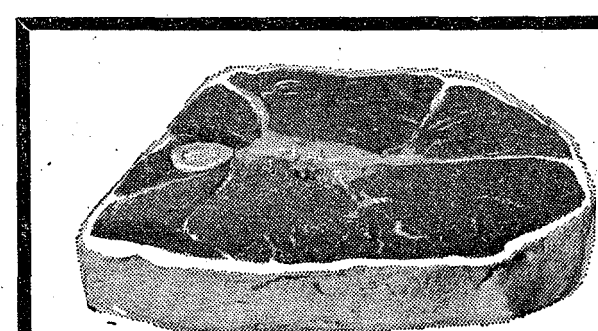
CRACKERS	16-Oz. Box	29¢
---------------------------	------------	------------

GLAD TRASH CAN

LINERS	10 Ct. Pkg.	53¢
-------------------------	-------------	------------

PILLSBURY EXTRA LIGHT

PANCAKE MIX	Box	39¢
------------------------------	-----	------------



TENDER, LEAN, BONELESS	
PORK LOIN ROAST . . . lb.	99¢
TENDER, LEAN	
BONELESS PORK CHOPS , lb.	\$1.19
FARMER PEET'S SKINLESS	
FRANKS lb.	79¢
FARMER PEET'S BULK SLICED	
BOILED HAM 1/2 lb.	59¢
FARMER PEET'S BULK RING	
BOLOGNA lb.	69¢
FARMER PEET'S OLD FASHION	
KNOCKWURST lb.	79¢

U.S.D.A. CHOICE BEEF SWISS OR

ROUND STEAK lb.	\$1.09
----------------------------------	---------------

U.S.D.A. CHOICE BEEF BONELESS ROLLED

RUMP ROAST lb.	\$1.19
---------------------------------	---------------

ARMOUR STAR SHANKLESS

CANNED PICNIC 3-lb. can	\$2.79
--	---------------

FARMER PEET'S REGULAR

SMOKED HAM lb.	49¢
---------------------------------	------------

HYGRADE BALL PARK ALL MEAT

FRANKS lb.	89¢
FRESH DRESSED SPLIT	
BROILERS lb.	35¢
FRESH SHOULDER	
LAMB ROAST . . . lb.	79¢
FRESH DRESSED	
WHITEFISH . . . lb.	99¢

ECKRICH	
SMORGASPAK . . . lb.	99¢
ECKRICH	
SMOK-Y-LINKS . . . 10-Oz. Pkg.	79¢

U. S. NO. 1 RUSSET MICHIGAN

POTATOES 20 lb. Bag	78¢
--------------------------------------	------------

U.S. NO. 1 MICHIGAN MCINTOSH OR JONATHAN

APPLES 3-Lb. Bag	39¢
-----------------------------------	------------

SWEET, JUICY TEMPLE

ORANGES doz.	59¢
-------------------------------	------------



FOR STEWS - PARSNIPS OR

TURNIPS lb.	33¢
SNO-WHITE	
MUSHROOMS lb.	99¢

SUNMAID	
SEEDLESS RAISINS 32-Oz. Box	75¢
FRESH	
ROASTED PEANUTS 24-Oz. Bag	99¢

U. S. NO. 1 MEDIUM

YELLOW ONIONS 3-Lb. Bag	49¢
--	------------

TUBE

TOMATOES 3-Ct. Tube	39¢
--------------------------------------	------------

TANGY

GREEN ONIONS . . . 2 Bchs.	29¢
-----------------------------------	------------

CRISP RED

RADISHES 6-Oz. Pkg.	29¢
--------------------------------------	------------

Services in Our Churches

ST. PAUL UNITED CHURCH OF CHRIST
The Rev. Warner Siebert, Pastor
Thursday, Jan. 20—
7:30 p.m.—Long-range planning committee.
Saturday, Jan. 22—
9:00 a.m.—Junior high confirmation program.
6:30 p.m.—Masonic banquet.
Sunday, Jan. 23—
9:15 a.m.—Church school.
10:30 a.m.—Worship service.
Psalms: "The Untidiness of Death."
Re-dedication of Church council.
Wednesday, Jan. 26—
7:15 p.m.—High school choir.
7:30 p.m.—Nursery captain's meeting.
8:15 p.m.—Chancel choir.

CONGREGATIONAL CHURCH
(United Church of Christ)
The Rev. Paul Gerhart, Pastor
Every Sunday—
9:00 a.m.—Senior High Sunday school.
9:45 a.m.—Sunday school.
10:00 a.m.—Morning worship.

ZION LUTHERAN CHURCH
Corner of Fletcher, Waters Rds.
(Rogers Corners)
The Rev. John R. Morris, Pastor
Thursday, Jan. 20—
7:15 p.m.—Junior High Choir.
8:00 p.m.—Senior High Choir.
Saturday, Jan. 22—
Youth classes.
Sunday, Jan. 23—
9:00 a.m.—Sunday school.
10:15 a.m.—Worship service. Installation of church councilmen, old and new.
Michigan District Pastor's Conference begins (through Wednesday) Tecumseh Woods.
Tuesday, Jan. 25—
7:30 p.m.—Women's shuffleboard.

FIRST ASSEMBLY OF GOD CHURCH
The Rev. Thode B. Thodeson, Pastor
Every Sunday—
9:45 a.m.—Sunday school.
11:00 a.m.—Worship service.
7:00 p.m.—Evangelistic service.
Every Wednesday—
7:00 p.m.—Midweek services.

NORTH SHARON COMMUNITY BIBLE CHURCH
Sylvan and Washburn Rds.
The Rev. William Enslen, Pastor
Every Sunday—
10:00 a.m.—Sunday school.
11:00 a.m.—Worship service.
6:30 p.m.—Young People's service.
Every Wednesday—
7:30 p.m.—Prayer meeting.

GREGORY BAPTIST CHURCH
The Rev. Grant Lapham, Pastor
Every Sunday—
10:00 a.m.—Worship service.
11:15 a.m.—Church school.
6:30 p.m.—Baptist Youth Fellowship.
7:30 p.m.—Evening worship service.

CHURCH OF CHRIST
13661 Old US-12, East
Lionel S. Burger, Minister
Every Sunday—
10:00 a.m.—Church school.
11:00 a.m.—Worship service.
6:00 p.m.—Worship service.
Every Wednesday—
7:30 p.m.—Bible Study.

ST. JOHN'S EVANGELICAL AND REFORMED CHURCH
(United Church of Christ)
Francisco
The Rev. Robert Townley, Pastor
Every Sunday—
10:00 a.m.—Worship service.
10:20 a.m.—Sunday school.

FIRST UNITED METHODIST CHURCH
The Rev. Clive Dickens, Pastor
Saturday, Jan. 22—
9:00 a.m.—Junior High UMYF cookie sale. Cookies to church by 9:30 a.m.
9:30 a.m. to 4 p.m.—Workshop at Bethlehem United Church of Christ, Ann Arbor. "A Day with Jesus."
8:00 p.m.—Action group card party, Mr. and Mrs. Jerry Boyd. Anyone welcome.
Sunday, Jan. 23—
9:00 a.m.—Church school, 4 years to adult.
10:00 a.m.—Worship service.
11:15 a.m.—Intermediate choir. No UMYF meetings this evening.
Wednesday, Jan. 26—
9:00 to 11:00 a.m.—Kaffee Klatch to explain restructuring of WSOS, home of Mrs. George Palmer. All church women welcome.
1:00 to 3:00 p.m.—Afternoon tea for all church women interested in the restructuring of WSOS, home of Mrs. George Palmer.
3:30 p.m.—Primary Choir.
4:00 p.m.—Junior Choir.
8:00 p.m.—Youth and Senior Choir.
7:30 to 9:30 p.m.—Evening desert, Mrs. George Palmer, to discuss WSOS restructuring.
8:00 p.m.—Jaycee Auxiliary, educational unit.

ST. BARNABAS EPISCOPAL CHURCH
20550 Old US-12
The Rev. C. Walton Pich, Vicar
Telephone 426-8815
Every Sunday—
9:15 a.m.—Holy Communion, first, third, and fifth Sundays.
9:15 a.m.—Morning Prayer, second and fourth Sundays.
ST. JOHN'S EVANGELICAL AND REFORMED CHURCH
(United Church of Christ)
Rogers Corners
The Rev. David J. Kleis, Pastor
Every Sunday—
9:30 a.m.—Sunday school.
10:30 a.m.—Morning worship.

SALEM GROVE UNITED METHODIST CHURCH
The Rev. Harry Weeks, Pastor
Every Sunday—
10:00 a.m.—Sunday school.
11:00 a.m.—Worship service.
ST. THOMAS EVANGELICAL LUTHERAN
Ellsworth and Haab Rds.
The Rev. Daniel L. Mattson, Pastor
Saturday, Jan. 22—
9:00 a.m.—Confirmation class.
Sunday, Jan. 23—
10:00 a.m.—Worship service.
11:00 a.m.—Sunday school and Bible class.
Tuesday, Jan. 25—
10:00 a.m.—Ladies' Bible study.
8:00 p.m.—Walther League executive board.
Wednesday, Jan. 26—
8:00 p.m.—Evangelism workshop.

NORTH LAKE UNITED METHODIST CHURCH
The Rev. Harry Weeks, Pastor
Every Sunday—
9:30 a.m.—Worship service.
10:30 a.m.—Sunday school.
FIRST UNITED PRESBYTERIAN CHURCH
Unadilla
The Rev. T. H. Liang
Every Sunday—
9:45 a.m.—Sunday school.
11:00 a.m.—Worship service.
Every Tuesday—
8:00 p.m.—Choir practice.

ST. JOHN'S EVANGELICAL AND REFORMED CHURCH
(United Church of Christ)
Francisco
The Rev. Robert Townley, Pastor
Every Sunday—
10:00 a.m.—Worship service.
10:20 a.m.—Sunday school.



TAE KWON DO KARATE will be offered to anyone from age six and up and are taught by Tuesday nights beginning Feb. 1, sponsored by the master instructor James C.B. Yu. Chelsea Recreation Commission. Classes are open

WATERLOO FIRST UNITED METHODIST
Parks and Territorial Rds.
Mrs. Altha Barnes, Pastor
Every Sunday—
9:15 a.m.—Morning worship.
10:30 a.m.—Sunday school.
First and Third Saturdays—
7:00 p.m.—Youth Fellowship at Village church Sunday school house.

ST. JACOB EVANGELICAL LUTHERAN CHURCH
12501 Rietmiller Rd., Grass Lake
The Rev. Andrew Bloom, Pastor
Every Sunday—
9:45 a.m.—Sunday school.
10:15 a.m.—Divine services.

BETHEL EVANGELICAL AND REFORMED CHURCH
(United Church of Christ)
Freedom Township
The Rev. Roman A. Reineck
Every Sunday—
10:00 a.m.—Worship.
11:15 a.m.—Morning worship.
10:00 a.m.—Sunday school.

CHELSEA BAPTIST CHURCH
837 Wilkinson
The Rev. James Stacey, Pastor
Every Sunday—
9:45 a.m.—Sunday school.
11:00 a.m.—Worship service.
Nursery care available during all services.
6:00 p.m.—Junior and Senior Baptist Youth Fellowship.
7:00 p.m.—Evening service.
Every Wednesday—
7:00 p.m.—Bible study and prayer meeting.

IMMANUEL BIBLE CHURCH
145 E. Summit St.
The Rev. LeRoy Johnson, Pastor
Every Sunday—
9:45 a.m.—Sunday school, nursery provided.
11:00 a.m.—Morning worship, nursery provided.
7:00 p.m.—Evening service.
Every Wednesday—
Family hour, prayer meeting and Bible study.

BAHA'I FIRESIDE
Every Thursday—
8:00 p.m.—At the home of Toby Peterson, 705 S. Main St. Anyone wishing to learn about the Baha'i faith is welcome.

CHELSEA MEDICAL CENTER
Every Wednesday—
1:30 p.m.—Worship service.

ST. MARY CATHOLIC CHURCH
The Rev. Fr. Francis Wahowiak, Pastor
Every Saturday—
7:30 p.m.—Mass.
Every Sunday—
Masses at 6:30 a.m., 8:00 a.m., 10:00 a.m., and 11:30 a.m.

VILLAGE UNITED METHODIST CHURCH OF WATERLOO
8118 Washington St.
Mrs. Altha Barnes, pastor
Every Sunday—
10:00 a.m.—Sunday school.
11:15 a.m.—Morning worship.
First and Third Saturdays—
7:00 p.m.—Youth Fellowship at Village Church Sunday school house.

OUR SAVIOR LUTHERAN CHURCH
1515 S. Main St.
The Rev. William H. Keller, Pastor
Every Sunday—
9:00 a.m.—Sunday school.
10:30 a.m.—Worship service.
Every Tuesday—
8:30-5:00 p.m.—Confirmation I
Every Thursday—
4:00 to 5:30 p.m.—Confirmation II
Every Saturday—
9:00 a.m.—11:00 a.m.—Confirmation III.

SUNDAY'S SERMON

★ Growth ...

A house is built brick by brick, plank by plank. It does not grow from the acorn like a tree.

So is the child born, an infant, helpless, needing care and attention to reach maturity and the useful days of life.

There are many steps along the way, many needs and requirements. Nourishment, love, guidance, protection, each in some way helps to shape and mold.

Foolish is the parent who believes that the child just "grows up," like the tree from the acorn. Some acorns never take root, but wither away on the ground. Some do not receive proper nourishment and cannot reach upward, straight and tall, toward the sky.

Growth is a natural development for all living things, but all things grow best under proper conditions.

DEEP FREEZE?
Underlying 20 percent of the world's land, permafrost in some places extends only a short distance beneath the surface, but on Alaska's North Slope it reaches depths of 2,000 feet.

FIRST CHURCH OF CHRIST, SCIENTIST
922 Washington Ave., Ann Arbor
Sunday, Jan. 23—
10:30 a.m.—Sunday school.
10:30 a.m.—Morning service.
Lesson sermon: "Truth."

from HISTORY'S SCRAPBOOK

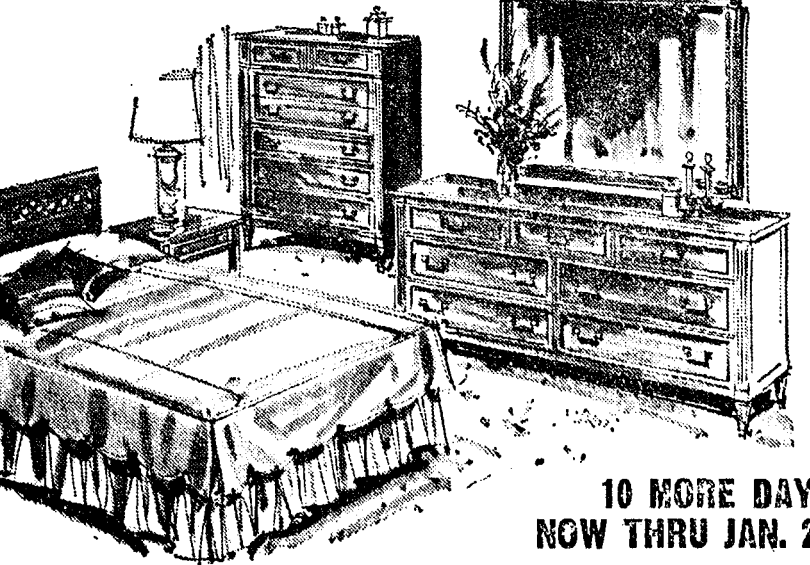
DATES AND EVENTS FROM YESTERYEARS
England formally recognized the Independence of the U.S., January 14, 1783.
The University of North Carolina was founded, January 15, 1795.
January 16, 1920 was the beginning of Prohibition in America.
The U.S. purchased the Virgin Islands from Denmark, January 17, 1917.
General Jose de San Martin began his liberation of Chile from Spanish rule on January 18, 1817, with the March over the Andes.
The law outlining Presidential Succession was passed by Congress, January 19, 1836.

Thayer Re-elected Chairman of Liquor Control Commission

Lansing—Stanley G. Thayer of Ann Arbor was re-elected to his sixth consecutive term as chairman of the Michigan Commerce Department's Liquor Control Commission at the Commission's annual meeting recently.
Thayer, who served two terms in the Michigan Senate from 1961-65, was appointed to the Commission in 1967. He is one of three attorneys on the five-member Commission.

FURNITURE SALE

SAVE 10% to 40% ENTIRE STOCK AT REDUCED PRICES



10 MORE DAYS NOW THRU JAN. 29

Merhel

HOME FURNISHINGS

A doctor who operates on himself has a fool for a patient.

It's an old saying, but it's never made more sense. There are some jobs in life that you just don't tackle by yourself. The preparation of your income tax should be one of them.

And that's where H & R Block, The Income Tax People, come in. H & R Block is America's largest tax service with more than 6,000 conveniently located offices to serve you. Your H & R Block representative is specially trained and can provide information on legitimate income tax benefits and opportunities that the average man on the street doesn't even know exists.

For instance, do you know all about deductions for child care or casualty losses? Or, that if your income increased over the last few years, you may save tax dollars by "income averaging"? And even if you did, would you know how to go about "income averaging" to begin with? Probably not. And there's no reason why you should. After all, you're an amateur when it comes to doing income tax.

H & R Block's charges start at \$5 and last year averaged under \$12.50 for over 7 million returns we prepared.

And, if we make any error in the preparation of your tax return that costs you any interest or penalty on additional taxes due, while we do not assume the liability for the additional taxes, we will pay that interest and penalty.

Our one time fee entitles you to year 'round tax service and assistance.

Come to the company that more than 7 million Americans placed their confidence in last year. Come to the people who will fill out your next income tax return efficiently, quickly, confidentially. Come to H & R Block.

DON'T LET AN AMATEUR DO H&R BLOCK'S JOB.

H&R Block.
The income tax people.

105 N. Main St., Chelsea

Phone 475-2752

SPECIAL thru Wednesday, Jan. 26, 1972 BRAZIER BURGER and LG. SHAKE

89¢

Home of fine Brazier food.

Dairy Queen
brazier.

901 S. MAIN ST., CHELSEA PHONE 475-2677

BOWLING NEWS



Chelsea Women's Bowling Club

Standings as of Jan. 12

	W	L
Sh's Cleaners	50	17
Sea Lanes	50 1/2	25 1/2
Market	48	33
Mixes	42	34
Union Eng. Co.	42	34
Electric	33	43
Union's	30	46
Union Serv. Press	24	52
American Rockwell	18	58
American Rockwell	18	58

Chelsea Suburban

Standings as of Jan. 12

	W	L
Queen Braizer	53 1/2	22 1/2
Ann	53	23
na	47	29
sfield Plastics	40 1/2	32 1/2
singer Realty	41	36
sea Lanes	40	36
or Mobil	37	39
ex Roll-Ons	33 1/2	42 1/2
icer's	32	44
terloo Garage	26	50
sea State Bank	25	51
to Farm	24 1/2	51 1/2

CHELSEA FINANCE CORP.

\$25 to \$1,000
For Any
Worthwhile Purpose

See or Call
FRANK HILL
at 475-8631

111 PARK STREET
CHELSEA, MICH.

Junior House League

Standings as of Jan. 12

	W	L
Bob Beefers	30	44
The Pub	32	51
J & S Tool	79	54
Wolverine No. 1	78	55
Gambles	63	70
3-D Sales & Service	63	70
Jiffy Mix	62	71
No. Amer. Rockwell	62	71
Smiths AIA Service	58 1/2	74 1/2
Boyer Automotive	57 1/2	75 1/2
Chelsea Lanes	56 1/2	76 1/2
Wolverine No. 2	47 1/2	85 1/2

200 Games: J. Toma, 252; J. Ledwiga, 228; O. Johnson, 224; S. Policht, 223 219; J. Myning, 202; J. Harook, 208, 210; J. Risner, 240, 215; E. Greenleaf, 201; A. Fleischmann, 206; P. Boham, 223, 203; A. Fletcher, 202, 222; G. White, 225; T. Dittmar, 221, 244; W. Beeman, 213, 222; C. Koengeter, 218; R. Kite, 255; J. Harmon, 202; D. Alexander, 214; D. Scott, 204, 201; C. Adkins, 200.

400 series: S. Policht, 600; J. Harook, 616; J. Risner, 637; A. Fletcher, 611; T. Dittmar, 626; W. Beeman, 610.

500 series: J. Toma, 596; J. Ledwiga, 550; O. Johnson, 590; J. Myning, 547; P. Ring, 563; L. Hughes, 526; E. Marshall, 507; D. Buks, 508; L. Fahrner, 539; N. Fahrner, 541; D. Walton, 539; E. Greenleaf, 515; T. Steele, 506; S. Dyer, 555; R. Prater, 504; A. Fleischmann, 544; P. Boham, 565; W. Brown, 526; H. Burnett, 500; G. Parker, 518; L. Bauer, 540; H. Kunzelman, 507; G. White, 588; C. White, 588; C. Koengeter, 565; R. Kite, 580; L. Hocking, 541; J. Harmon, 556; A. Sannes, 512; R. V. Worden, 528; D. Alexander, 527; D. Eder, 513; D. Scott, 588; C. Adkins, 548; S. Hopkins, 517.

Charlie Brown and Snoopy's Friends

Peanut League

Standings as of Jan. 15

	W	L
Pin Crackers	37	11
Snoopy Stars	36	12
Harlem Globetrotters	30	18
Meat Balls	23	25
Super Stars	22	26
French Fries	21	27
Plintstones	13	35

Series over 100: T. Miller, 124; R. Klink, 153; J. Stock, 218; D. Alber, 263; M. Foster, 161; D. Bowen, 163; J. Krichbaum, 156; M. Peters, 121; C. Thams, 113; M. Alexander, 153; T. Schultz, 149; C. Ford, 181; D. Biele, 135; M. Steinaway, 170; D. Waldyke, 212; D. Thompson, 142; M. Sweet, 123; A. Atkinson, 101; T. Greenleaf, 122; C. Umstead, 158; B. Ostrander, 174; C. Kalishek, 152; S. Rademacher, 117; B. Freeman, 142; R. Schultz, 124; G. Egeler, 118; D. McGill, 161.

Games 70 and over: C. Umstead, 89; B. Ostrander, 88; C. Kalishek, 83; B. Freeman, 73; R. Schultz, 71; D. McGill, 74; R. Klink, 96; J. Stock, 105; 118; D. Alber, 126, 137; M. Foster, 83; D. Bowen, 77, 86; J. Krichbaum, 97; M. Alexander, 88; T. Schultz, 85; C. Ford, 70; M. Steinaway, 84, 86; D. Waldyke, 107, 105; D. Thompson, 83; T. Greenleaf, 70.

Leisure Time League

Standings as of Jan. 18

	W	L
Misfits	43 1/2	28 1/2
The Mums	36	36
Plus Three	36	36
The Nags	33 1/2	38 1/2
Alley Cats	33	35
Rug Rats	30	42

Over 140: D. Thompson, 453, 150; K. Haywood, 160; S. Centilli, 144; S. Weston, 146.

400 series: D. Thompson, 438; K. Haywood, 424; S. Weston, 406.

Junior Swingers

Standings as of Jan. 15

	W	L
Rods	43	20
B. C's	46 1/2	20 1/2
74 Swingers	37	31
Pin Pushers	30	38
Stinkers	31	37
Champions	23	33
B.B.A.	24 1/2	42 1/2
Saturday Strikers	23	44

Scores over 180: K. Reilly, 130; R. Weiner, 157; T. Abdon, 132; D. Beumont, 150, 135; J. Toon, 154; M. Burnett, 137, 132; J. Collins, 150, 147, 182; V. Burnett, 139, 150, 136; L. Hafner, 155; K. Reilly, 124; K. Romine, 138; S. Lyerla, 144; D. Messner, 148, 164; D. Alber, 164, 140, 164.

Series over 350: M. Fahrner, 395; K. Reilly, 362; R. Weiner, 394; D. Eisele, 364; S. Grub, 356; J. Toon, 354; M. Burnett, 353; J. Collins, 453; V. Burnett, 425; L. Hafner, 384; S. Lyerla, 384; D. Messner, 440; D. Alber, 468; K. Reilly, 372.

Guys & Gals Mixed League

Standings as of Jan. 13

	W	L
Pub No. 2	43	25
Pub No. 1	41	27
Chelsea Lanes	39	29
Grass Lake	39	29
Seitz Tavern	35	33
Team No. 1	34	34
The Odd Couples	32	36
Norris Electric	32	36
Pleasant Lake Resort	30	38
Chelsea Standard	29	39
Hay Haulers	27	41
Lanewood	27	41

Team, high game: Pleasant Lake Resort, 2,504.

Women, high game: S. Walton, 202.

Women, 150 or over games: E. Koengeter, 166; S. Walton, 173, 202; V. Cooper, 163; N. Collins, 172, 172; S. Steele, 160; P. Elliott, 190, 155; D. Sannes, 158; J. Norris, 174, 166.

Women, 450 or over series: P. Elliott, 471; S. Walton, 519; N. Collins, 474; J. Norris, 464.

Men, high game: F. Cooper, 214.

Men, high series: J. Elliott, 599.

Men, 175 or over series: K. Koengeter, 185; O. Timmerman, 193; F. Cooper, 214, 210; T. Steele, 178, 187; J. Elliott, 205, 181, 213; A. Sannes, 199; D. Alexander, 190; J. Collins, 187; R. Schmude, 176.

Men, 500 or over series: A. Sannes, 538; T. Steele, 523; J. Elliott, 599; O. Timmerman, 530; F. Cooper, 582.

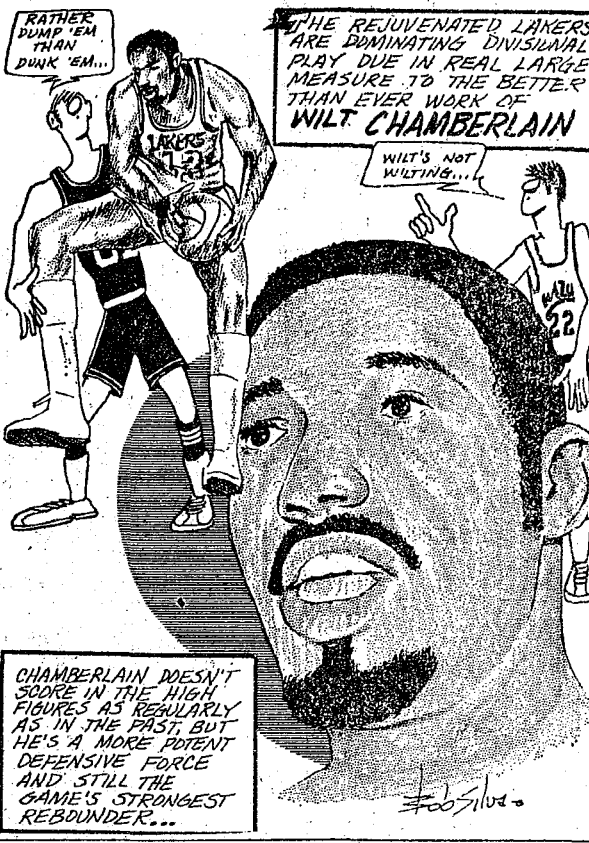
Rolling Pin League

Standings as of Jan. 18

	W	L
Egg Beaters	51	29
Spooners	47	33
Grinders	46	34
Moppper Uppers	45 1/2	34 1/2
Mixers	43 1/2	36 1/2
Kookie Cutters	42 1/2	37 1/2
Coffee Cups	41	39
Pots	38 1/2	40 1/2
Kitchen Kapers	35	45
Dish Rags	33	47
Jolly Mops	31	49
Brooms	28	52

400 and over series: J. Rabbitt, 430; E. Reynolds, 408; J. Priest, 431; C. Shepherd, 420; D. Kinsey, 465; S. Parker, 402; K. Del Prete, 463; W. Waldecker, 487; D. Butler, 400; M. Hoover, 408; P. Harook, 494; L. Keizer, 493; D. Keizer, 481; J. Lewis, 425; G. Klink, 426.

140 and over games: A. Foster, 149; J. Lewis, 170; G. Klink, 182; B. Marsh, 171; M. Hoover, 162; P. Harook, 191, 166; L. Keizer, 145, 181; D. Keizer, 144, 148; W. Waldecker, 197; J. Johnson, 140; R. Strieter, 145; D. Butler, 187; D. Kinsey, 155, 153, 157; S. Parker, 141; D. Diriam, 159; K. Del Prete, 159, 160; R. Biele, 151; G. Greenleaf, 140; C. Shepherd, 144, 146; J. Edick, 154; E. Williams, 146; J. Rabbitt, 153, 143; G. Brier, 146.



CHAMBERLAIN DOESN'T SCORE IN THE HIGH FIGURES AS REGULARLY AS HE'S IN THE PAST, BUT HE'S A MORE POTENT DEFENSIVE FORCE AND STILL THE GAME'S STRONGEST REBOUNDER...

160; E. Reynolds, 146; J. Priest, 160.

Splits converted: J. Lewis, 5, 7; R. Cook, 2, 7; D. Diriam, 6, 7; K. Del Prete, 6, 10; S. Hughes, 4, 5, 7 and 5, 10; J. Shepherd, 2, 7; C. E. Williams, 5, 6, 10.

Chelsea Nite Owl League

Standings as of Jan. 17

	W	L
Steele's Heating	43 1/2	27 1/2
Gambles	43	33
Pump & Pantry	47 1/2	28 1/2
Chelsea Finance	41	35
Cavanaugh Lake Store	41	35
Poster's Men's Wear	38	38
Smith's A.A.	36	40
Heller Electric	36	40
Ted's Standard	33	43
Arco Sparks	32	44
Jack & Son Barbers	31	45
McCalla Mobile Feeds	29	47

500 series: T. Steele, 578; E. Buku, 571; A. Fletcher, 555; W.

Smith, 537; A. Peterson, 536; M. Packard, 536; R. Bush, 530; R. Smith, 526; A. Kuhl, 521; J. Gaken, 510; T. Stepp, 510; J. Turner, 507; R. Bradley, 507; T. Schulze, 506; D. Buku, 501.

200 games: T. Steele, 224; A. Fletcher, 209; E. Buku, 207, 200; W. Smith, 207; R. Smith, 203; R. Bradley, 200.

Senior House League

Standings as of Jan. 17

	W	L
Chelsea Cleaners	49	27
Sam's Barber Shop	47 1/2	28 1/2
Bogar Builders	45 1/2	30 1/2
Chelsea Grinding	43	33
Sylvan Center	42 1/2	33 1/2
Spaulding Chevrolet	41 1/2	34 1/2
Pub Bar	38	38
Schneider's Grocery	32	44
Dana No. 1	31	45
Dana No. 2	29	47
Seitz's Tavern	28	48
McPhy's Barber Shop	27	49

600 series: A. Fletcher, 606; M. Kern, 621; J. Myning, 617.

500 series: J. Harook, 548; J. Collins, 502; M. Poertner, 582; N. Fahrner, 530; R. Kern, 520; M. Sweet, 502; D. Murphy, 547; L. Hess, 588; T. Kruse, 534; S. Siane, 520; G. Lawrence, 543; J. Eder, 514; F. Dickerson, 532; R. Spaulding, 546; H. Morton, 519; D. Hafley, 517; J. Jones, 514; D. Coppernoll, 515; A. Clemes, 564; H. Burnett, 524; W. Griffith, 509; A. Sannes, 572; G. Knickerbocker, 529; N. Ernst, 542; E. Harook, 562; J. Harmon, 528; L. Keizer, 528; R. Bauer, 506.

The Chelsea Standard, Thursday, January 20, 1972 11

Old Timers Bowling League	
Standings as of Jan. 14	
	W L
Sportsman's Tavern	43 1/2 27 1/2
Gloverleaf Lanes	45 1/2 30 1/2
Team No. 16	45 1/2 31
Milan Screw Products	42 1/2 33 1/2
Has Beans	41 1/2 34 1/2
Bob & Otto	41 1/2 35
Sanford Security	40 1/2 36
Colonial Lanes	38 1/2 38
Hutzel Service	38 1/2 38
Team No. 14	38 1/2 38
Nelson Realtors	35 1/2 41
Ehms & Sons	32 1/2 44
Stein & Goetz	31 1/2 44 1/2
Dexter Bowling Club	30 1/2 46
Pub Bar	27 1/2 48 1/2
Team high game, series: Bob and Otto, 859, 2,550.	
Ind. high game: Lloyd Hall, 229.	

Ind. high series: Art Frank, 535.

Other 200 games and 500 series: C. Burniester, 224; B. Elliott, 214; Emil Yek, 210; Henry Vick, 221; Clarence Bissell, 209; C. Adams, 200; Emil Yek, 552; Paul Johnson, 547; Ernie Niehammer, 542; C. Riehlmeier, 638; B. Elliott, 538; J. Succo, 531; H. Vick, 529; C. Burmeister, 518; Lloyd Hall, 527; G. Lawrence, 521; T. Phillips, 510; W. Finch, 509; S. Mathews, 504; W. Fishlock, 509; P. Grabow, 513; E. Armbruster, 506; L. Dann, 505; C. Adams, 503; C. Bissell, 501.

Stein & Goetz and Sportsman's Tavern each won three games.

WASTED PAPER? On the average, each American uses between 500 and 575 pounds of paper a year.

Subscribe today to The Standard!

SING-ALONG MUSIC at INVERNESS INN

NORTH LAKE

Saturday Nights - 9:30 p.m. to 1:30 a.m.

Music By

JIM ROMINE and GARY SCRIPPER

YOUR FAVORITE SANDWICHES

SHRIMP, CHICKEN & FISH DINNERS

BEER - WINE - LIQUOR

SALE

- ★ JANTZEN SWEATERS
- ★ RAINFAIR TOP COATS
- ★ WINDBREAKER JACKETS
- ★ CURLEE SUITS & SPORTCOATS

20% to 50% OFF

Strieter's Men's Wear

"The Place To Go for Brands You Know"

How do you spot a GOOD GUY?

CHECK HIS DODGE I.D.

Dodge CHRYSLER
AUTHORIZED DEALERS

1972 DODGE CHARGER.

Check our Charger

Irresistible Design.

A great car starts with great styling.

Dodge Charger was picked by Car & Driver magazine as the "Best-Styled Car for 1971" with over 72 version has the same great shape, with subtle touches of newness. (We think it's even better than before.)

Check our Charger

Impeccable Detail.

It takes more than just a great-looking shape to make Charger such a success. It's a lot of important little things—details that make a difference. Things like a safety keyless door locking system, concealed wipers, all-vinyl seats—all standard. Impeccable Detail means the solid handling of the torsion-bar front suspension and the strength of Unibody construction. It's all there in a '72 Charger. Depend on it.

Check our Charger

Interior Dimensions.

When you buy a sporty '72 Dodge Charger, you're getting a family car. Charger's big enough to be a "first car"—an "only car." Check Charger's six-passenger room before you buy any now car.

Check our Charger

Increased Demand.

Last year, Dodge Charger sales zoomed up 75 percent above those of the previous year. Obviously, Charger had what a lot of style and value-conscious car buyers wanted. Now at a time when people seem to do a lot more thinking about their next new car, shouldn't you be thinking about a car like Charger '72?

VILLAGE MOTOR SALES, INC.

1185 MANCHESTER ROAD
CHELSEA, MICHIGAN

DEPEND ON THE DODGE BOYS

Billiards THE FAMILY GAME

New Fun Game, Easy To Play... All Can Learn!

Try billiards for an evening's fun. It's new... exciting... easy to learn... the whole family can play together... great fun, and so inexpensive!

CHELSEA LANES

1180 M-52 Phone GR 5-8141

FOR PROFIT

FEED

BIGGER PORK PRODUCTION FOR YOUR FEED DOLLAR...

For thriving sows, fast-growing pigs and fast-gaining hogs, count on our enriched feeds... see the results in fatter profits for you.

Farmers' Supply Co

Phone GR 5-5511



NEW JAYCEES: Three new Jaycees were installed at the annual Bosses Night dinner Tuesday. Terry Lawrence is the first Chelsea Jaycee under 21 years old. Left to right are Dick Cail, membership director, Lawrence, Tim Orthbrink, Terry Whitesall and Dave Rowe, Jaycee president.

John LaFontaine Cited By Insurance Company

A Chelsea man was recently honored by the Western & Southern Life Insurance Co. of Jackson for excellence in sales work.

John LaFontaine, 1712 Ridge Rd., was awarded the company's National Quality Award. LaFontaine is a sales representative.

To be eligible for such an award an applicant must qualify in three areas: work full time in the insurance business; achieve 90 percent persistency of business that was written; be a registered member of the National Association of

Life Underwriters through a local life underwriters association with current dues paid.

A quick and easy way to prepare a zesty sauce to serve over pudding or cake is with eggnog. Simply combine 1 package (8 ounces) vanilla pudding mix with 1/2 teaspoon nutmeg. Stir in 2 1/2 cups eggnog. Cook over medium heat, stirring constantly, until pudding comes to a full boil. Serve hot to warm up any winter evening.

Thought For Food

An excellent platter garnish is meringue peaches. Fill centers of drained canned cling peach halves with mincemeat (1 tablespoon in each half). Top with stiff meringue (2 tablespoons sugar per egg white) and bake in a 400 degree F. oven for 5 to 7 minutes until slightly browned. They're ideal with roasts.

Telephone Your Club News To GR 5-3581.

4-H Clubs

GARFIELD GANG

We met at the Borton's new house on Orchard St. Mrs. Borton took us on a tour. It is a pretty house and very big. Jamie Atkinson brought treats. We played a game about ourselves. We decided on our next project. We will make and decorate a doll house for the retarded children at the Evangelical Home. We will make it big and strong and paint the furniture bright colors. We will knit, sew, and crochet to make the rugs, curtains and blankets. We will put up wall paper and put down rugs. We are doing a continuing health project about our bodies. We will start at the top. Our first topic is hair.

Our new officers are: Katie Donkin, president; Kelli Borton, vice-president; Carrie Lane, treasurer; Julie Botsford, secretary; Mary Lynn Noah, song and game leader; Cindy Barrels, clean-up; Tracy Cattell and Kathy French, cookie committee.

We are planning a skating party and a bike-hike. Mary Lynn made the motion to end the meeting. Tracy seconded it.

Jamie Atkinson
Kathy Villemure, reporters.

Driver's License

Suspended for 90 Days

Ronald Gene Rowe, 8615 Chelsea Rd., had his license suspended Tuesday morning by a Michigan State Secretary of State Drivers Evaluation Board.

The suspension, for 90 days, springs from a charge of driving under the influence of liquor, for which the board found him guilty based on evidence submitted by Dexter Police Officer Ray Smagasz.

Cager of the Week



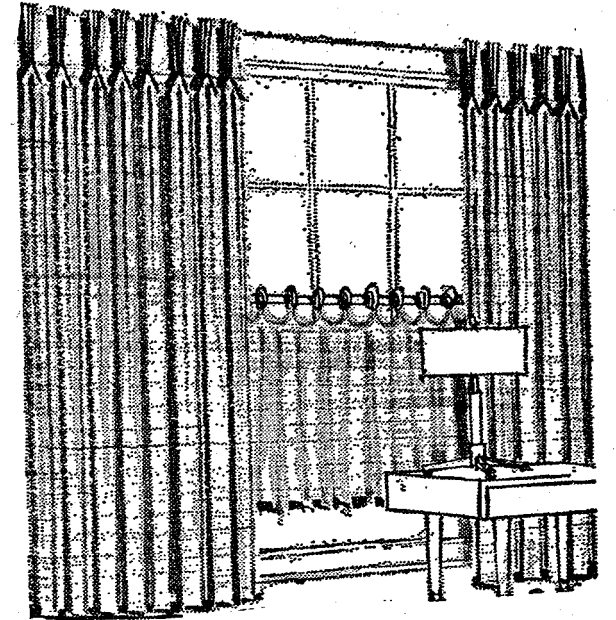
JEFF SCHMIDT, 6'5" Junior, is a center for the Bulldogs and is in his second year as a varsity cager. Jeff is also a two-year varsity veteran for the football team. He sings in the Festival chorus and enjoys swimming and golf. Jeff plans to attend college after graduation. He is the son of Mr. and Mrs. Richard Schmidt, 14356 Eisenbeiser Dr.

CUSTOM DRAPERY SALE

ENTIRE SINCLAIR LINE

SAVE 20%

1 MORE WEEK - UNTIL JAN. 26



Merkel
HOME FURNISHINGS



TAKE YOUR PICK
ANY CARPET, ANY PAD*
NOW ON SALE
FOR 10% BELOW
REGULAR PRICES
NOW THROUGH
THE END OF THE MONTH

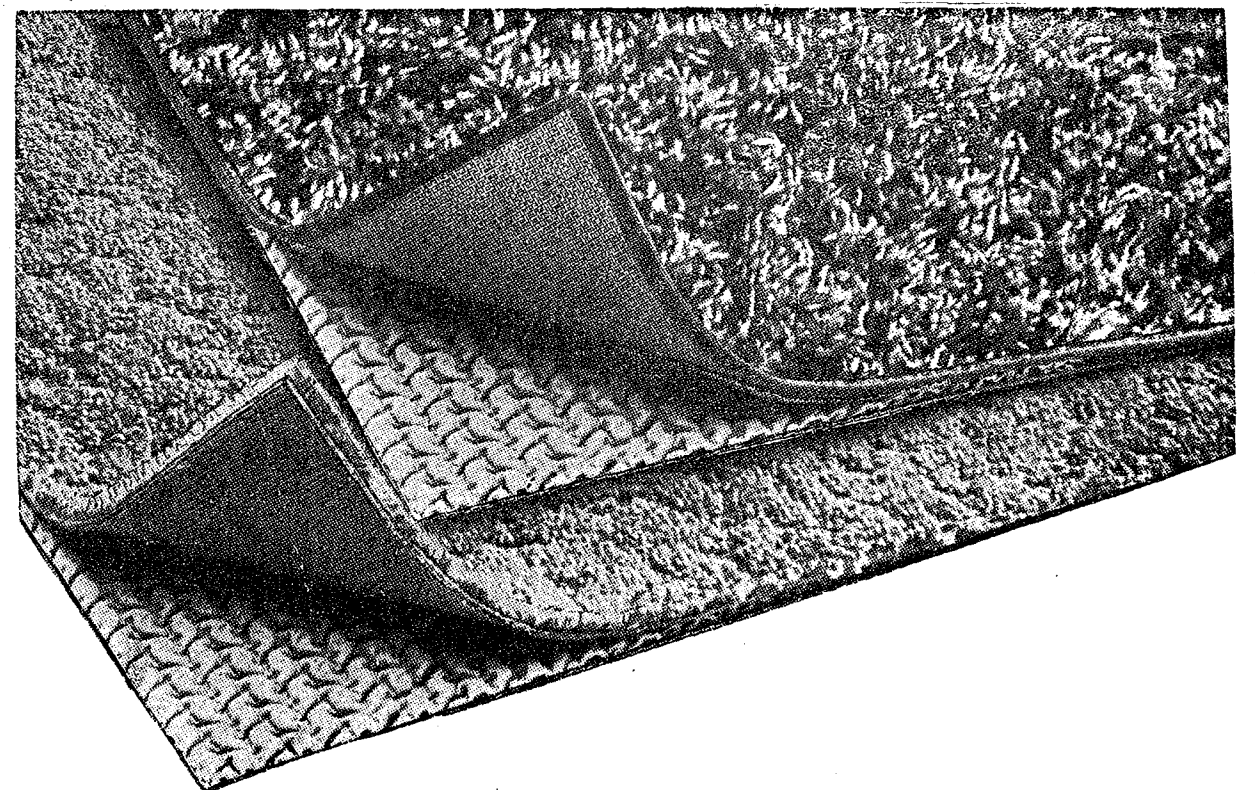
STEP ON IT - SALE ENDS NEXT WEEK-END!

*Except where
manufacturer
strictly forbids

Merkel

FURNITURE and CARPET

Main Street in Chelsea • Telephone 475-8621 • Open Monday and Friday Nights 'til 9.
Professional Interior Design Consulting.



**PAD AND CARPET
10% LESS ON OUR
JANUARY CLEARANCE**

ESTIMATES — TERMS

INSTALLED BY SKILLED CRAFTSMEN

Merkel's

PHONE CHELSEA 475-8621



Barbara Salyer, Stephen J. Allen Wed Sat'y at Fitchburg Church

Miss Barbara Salyer and Stephen J. Allen exchanged wedding vows Saturday, Jan. 15, at the Trinity Pentecostal church in Fitchburg. The Rev. Charles E. Roark officiated at the ceremony.

The bride is the daughter of Mr. and Mrs. Charles E. Salyer, 18498 M-52, Chelsea. The bridegroom's parents are Mr. and Mrs. Stephen Allen, 5204 Shipper Rd., Stockbridge.

The bride appeared in a gown of lace and white satin, with long sleeves and fitted bodice. Complementing the gown was a chapel train of illusion falling from the headpiece. The bride carried a bouquet of white carnations and red roses with white stephanotis.

Sister of the bride, Miss Lorraine Salyer of Chelsea, performed the duties of maid of honor. She wore a green velvet dress and carried a bouquet of white and green carnations.

The bridesmaids, Miss Charlotte Salyer, cousin of the bride, Chelsea, and Miss Pamela Atchinson, Jackson, also a cousin of the bride, wore red velvet dresses. They carried white and red carnations.

For her daughter's wedding Mrs. Salyer chose a pink crepe costume with silver trim, and pink and silver accessories. The bridegroom's mother chose a baby blue shantung coat dress with silver accessories.

The bridegroom's brother, David Allen, Stockbridge, served as best man.

Marilyn Bauer Honored At Bridal Shower

A bridal shower in honor of Miss Marilyn Bauer was given Sunday by Mrs. Robert Robbins and Darlene Robbins at their home.

The bride's chosen wedding colors of red and white were used for the shower decor. Pouring refreshments were the two grandmothers of the bride-to-be, Mrs. George Bauer, and Mrs. Irene Proctor.

Each of the 26 guests were presented with a red, mum corsage. Miss Bauer will marry Robert Runyan of Chicago, on Feb. 19.

KINDER KLUB

Kinder Klub met Jan. 11 at the home of Mrs. Tony Bowen with 18 members present.

Two new members were installed, Mrs. Ray Ziegler and Mrs. Larry Koch.

Mrs. Joyce Siebert presented the program, "Tell Me What You Eat, and I'll Tell You What You Are."

Next meeting will be a field trip Feb. 8 to Stretch & Sew fabric center.

Girl Scouts...

TROOP 169

On Monday we had Mrs. White and Kathy White from Dexter tell us about Kathy's doll collection. We saw dolls of many different kinds. Troop 145 joined us. We finished our corn husk dolls and made plans for our winter party next week.

Amy Reynolds, scribe.

Guests were seated by Daniel Salyer, brother of the bride, and bridegroom's cousin.

Following the ceremony, a reception was held at the American Legion Hall in Stockbridge.

The bridegroom is employed at Rhe-Tech at Whitmore Lake. The couple will reside in Chelsea.

GIRL SCOUT NEWS



TROOP 98

We started the meeting by playing games. We played detective, Doctor Knickerbocker and a broom game called moon. Next week we are having a maintenance lesson. We are going to take a 10-mile hike. Our troop is going to teach the Junior Scouts and Brownies some games.

There was no meeting Jan. 4. Instead we went ice skating Jan. 6. We are not having a pajama party.

Julienne Tucker, scribe.

TROOP 47

We collected dues and then we had treats. Our troop leaders had to tell of things we had to do. Then we had flag ceremony and started on our first aid badge. We learned three things: how to anchor a bandage, how to do artificial respiration and how to use a sling. On Jan. 8 our troop went sledding at Kiser Hill. We had hot chocolate and cookies. We built a fire and went home.

Beth Wireman, scribe.

TROOP 98

We started the meeting with a movie about taking care of our fingernails. We talked about Father and Daughter Night. The Cadette troop is cooking the spaghetti. We are taking our 10-mile hike on Feb. 29.

There was a suggestion that we help at the hospital in Chelsea.

Tracy Updegraff, scribe.

TROOP 58

On Jan. 17 the cadettes came over and taught us some new games. We played the scissors game and the music game and the egg game. Mrs. Satterthwaite game and showed us a movie on how to take care of our fingernails and hands.

Karen Updegraff, scribe.

Subscribe today to The Standard!



URGES ABORTION REFORM: Mrs. Jan Tice stressed the need for abortion law reform in Michigan Monday evening in a talk before the Kiwanis Club. She is an administrative assistant for Senator

Gil Bursley. With Mrs. Tice, left to right, are Kiwanians Tom Dmoch, Walter Zeeb, Louis Burghardt and Charles Cox.

Proposed Abortion Reform Bill Explained to Kiwanians

Michigan's need for an abortion reform bill was stressed Monday night in an address by Jan Tice, administrative assistant for Michigan State Sen. Gil Bursley.

Mrs. Tice said one of every four pregnancies in Michigan terminates in abortion, either legal or illegal. She said last year in Detroit alone, 30,000 women obtained legal abortions in New York.

She and Sen. Bursley feel this indicates a clear need for abortion law reform in this state. The current movement to bring about this reform centers on obtaining enough signatures to put the issue on the ballot as a referendum. Mrs. Tice said about 65 percent of the needed signatures have been collected, and spokesmen of the movement are reasonably sure enough signatures can be obtained.

The proposed law reads: "All other laws to the contrary notwithstanding, a licensed medical or osteopathic physician may perform an abortion

at the request of a patient if the period of gestation has not exceeded 20 weeks. The procedure shall be performed in a licensed hospital or other facility approved by the Department of Public Health."

This proposed reform will give women the right to decide if they want to have a baby, Mrs. Tice said.

She said private polls, some conducted by state senators, have shown that about 7,890 percent of the people in Michigan are in favor of abortion reform, and such a law would be a response to the citizens' wants and needs.

Mrs. Tice spoke at a regular meeting of the Chelsea Kiwanis Club at the Fair Service Center, Monday evening.

VILLAGE BEAUTY SALON

LORETTA - CINDY - EULA
MARGE - ARLENE - SARAH

107 N. MAIN

PHONE 475-5421

OPEN MONDAY THRU SATURDAY

Evenings By Appointment

Area Students Named to WMU Fall Honor List

A Chelsea student was among the 1,900 Western Michigan University scholars named to the fall semester dean's list.

To win the honor, students must be enrolled in at least 14 hours of class work and maintain a grade point average of 3.5 on a 4.0 scale.

Named to the list was Gary Robert Larson, son of Mr. and Mrs. Darrell R. Larson, 325 Middle. Larson is a 1968 graduate of Chelsea High School.

Also honored, from Dexter, was Elizabeth Jean Yeakel, daughter of Mr. and Mrs. John Yeakel, 2308 Scio Rd. Miss Yeakel is a 1970 graduate of Dexter High School.

Earning recognition from Manchester were Beverly Jill Feldkamp, daughter of Mr. and Mrs. Rene Feldkamp, 8710 Smythe Rd., and Sandra Janice Roller, daughter of Mr. and Mrs. Duane Roller, 20351 Schweb Rd. Miss Feldkamp is a 1970 graduate of Manchester High School, and Miss Roller graduated in 1963.

Home Economics Study Groups Calendar

Jan. 21—Freedom Ideal Homemakers Study Group, home of Mrs. E. Hutzler, 1411 Las Vegas, Ann Arbor, 1:30 p.m. Featuring a silent auction.

Jan. 25—West Bridgewater Study Group, home of Mrs. Jack Davis.

Saratoga chops are boneless lamb chops made from the inside shoulder muscle.

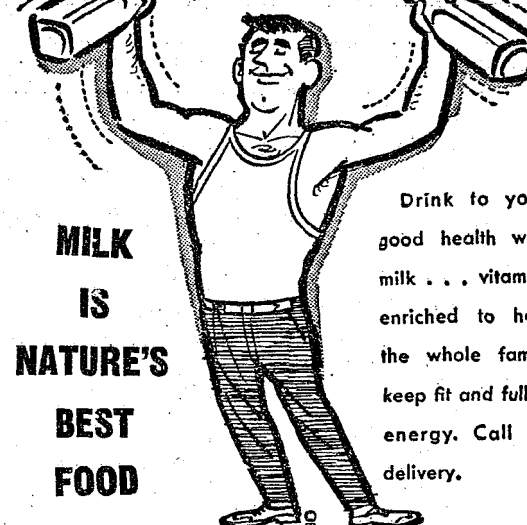
Magic Mirror Beauty Salon

Open Monday thru Friday
9 a.m. to 9 p.m.

Saturday, 8 a.m. to 3 p.m.

PHONE 665-0816

KEEP FIT WITH MILK



MILK
IS
NATURE'S
BEST
FOOD

Drink to your
good health with
milk... vitamin-
enriched to help
the whole family
keep fit and full of
energy. Call for
delivery.

Hickory Ridge Farm Dairy

(Successor to Weinberg Dairy)
Stockbridge, Mich. Phone (517) 851-3000

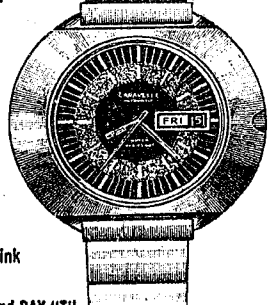
a click of the crown
advances the date on these

CARAVELLE® DATE and DAY AUTOMATICS by BULOVA

Any automatic date and day watch knows Friday comes after Thursday. But what happens when the 1st comes after the 30th—and not the 31st? An ordinary calendar watch turns to you for turning.

Not the new Caravelle Date and Day Automatics with "Instant Set". A click of the crown advances the date a full 24 hours, instantly. Without disturbing the time or weekday setting.

The styling is jet set, too. Dynamic dome-shaped cases that blend into bold link or mesh bands. Mighty, manly, modern.



DATE and DAY "T"
Two-tone blue dial with red
sweep hand and minute track.
\$59.95

ANTI
MAGNETIC

17 JEWELS

UNBREAKABLE
MAINSRING

SHOCK
RESISTANT

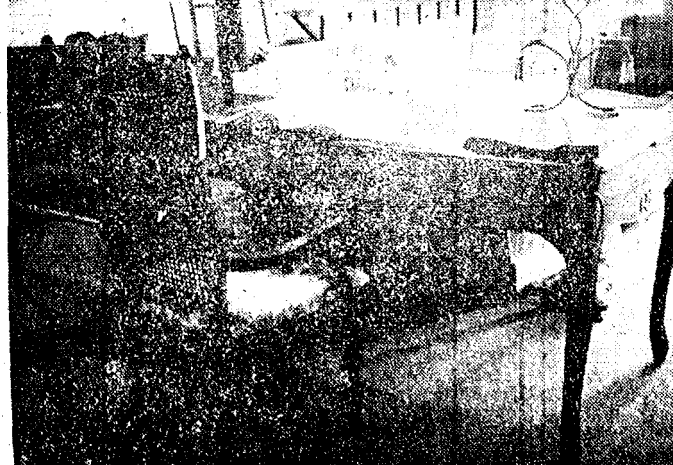
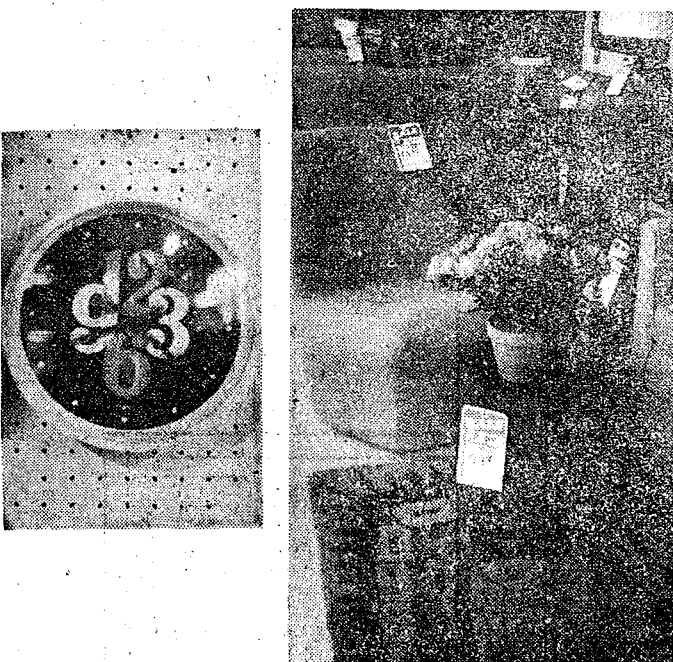
WATER
RESISTANT



DATE and DAY "T"
All stainless steel with
white or ebony dial.
\$55.00

DATE and DAY "T"
In stainless steel with blue
dial or goldtone with green dial.
\$59.95

WINANS JEWELRY



OUR CLEARANCE SALE
CONTINUES... ALL FURNITURE
IN STOCK 10% TO 40% OFF.
SPECIAL ORDERS 10% OFF.

Merkel

FURNITURE and CARPET

Main Street in Chelsea • Telephone 475-8621 • Open Mon. & Fri. 'til 9

• Professional Interior Design Consulting



MEMBERS SINCE 1947: Active charter members of the Michigan Animal Breeders Co-operative, Washtenaw-Chelsea Local are, left to right, Walter Wolfgang, Chelsea; Lowell Spike, Manchester, and Walter Breuninger, Dexter. These men helped organize the local chapter of MABC.

MABC Local Marks 25th Year at Anniversary Meeting

Michigan Animal Breeders Co-operative, Washtenaw-Chelsea Local (MABC) met Tuesday evening for its 25th anniversary annual meeting. 120 persons attended.

Sales and service manager for MABC, James Day, presented the feature program concerning special matings to obtain young sires and the collection, processing, testing and storage of semen. Day also showed slides of four Gold Medal sires and some of their offspring.

Recognition was given to three active charter members at the meeting. Honored were Walter Breuninger, Dexter; Lowell Spike, Manchester; and Walter Wolfgang, Chelsea. These members

were instrumental in signing up the first 300 cows necessary to establish the local chapter.

James Bradbury, Dexter, technician for MABC, presented a history of the early artificial insemination work in Washtenaw county. He recounted the early delivery methods of fresh bull semen from the co-operative's Lansing headquarters using railroads, buses and planes. Bradbury, an inseminator since the group's organization in 1947, and has provided daily artificial breeding service to nearly 200 local farmers.

In other business, two board members were elected to serve three-year terms: Herman Koenn, Chelsea, incumbent president of

the local board and treasurer of the state board of directors, and Ron Kuhl, Manchester.

SCHOOL LUNCH MENU!

Week of Jan. 24-28

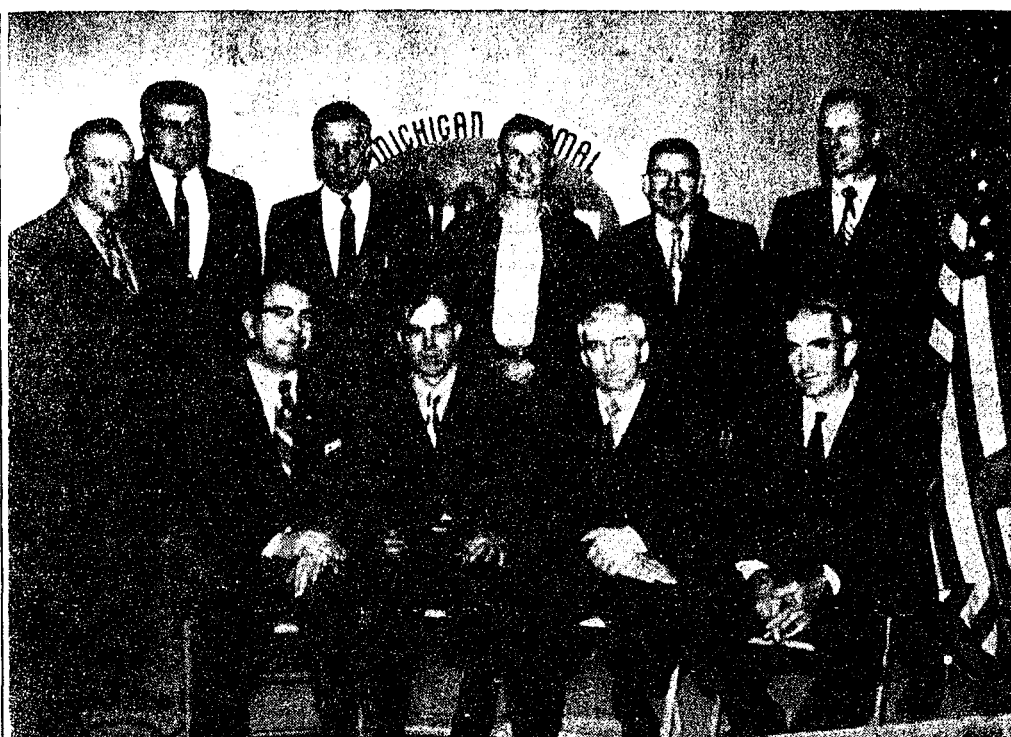
Monday, Jan. 24—Sloppy joes, cheese, buns, buttered spinach, vinegar, fruit coffee cake, milk.

Tuesday, Jan. 25—Shepherd's pie, head lettuce salad, bread and butter, chocolate eclaire, milk.

Wednesday, Jan. 26—Hamburgers, buns, buttered vegetable, fries, cherry cake, milk.

Thursday, Jan. 27—Meat balls, tomato sauce, buttered rice, bread and butter, ice cream and cookies, milk.

Friday, Jan. 28—Toasted cheese sandwich, potato chips, lettuce and tomato salad, hot apple goodies, milk.



MABC BOARD OF DIRECTORS: Members of the board of directors for Washtenaw-Chelsea Local of the Michigan Animal Breeders Co-operative were present for the 25th anniversary annual meeting Tuesday evening. Seated in front row, from left, are Herman Koenn, president, Raymond Schayer, secretary, James Bradbury, technician, and Robert Breuninger; back row, from left, are Robert Mast, vice-president, Les McCalla, Wesley Amsdill, John Bihlmeyer, Harold Sias and Ronald Kuhl.

Helbert Carpenter Sentenced on Long Standing Charges

Washtenaw County Sheriff's Department and Chelsea police officer Bruce Sibert arrested Helbert Lynn Carpenter, 22, Jan. 11 on charges of simple larceny and fleeing a police officer.

A bench warrant had been issued for Carpenter's arrest since 1969. He was also wanted by Jackson County Sheriff's Department for breaking and entering and escaping from the Jackson County Jail, and in Ann Arbor for assault and battery.

Carpenter was taken to Chelsea District Court where he was sentenced to six months in the Washtenaw County Jail on the Washtenaw county charges.

The newly-married homemaker or the woman who was used to cooking for a good-sized family and is now cooking for just herself and her husband, needs to check her buying habits. No longer are the larger, or giant-sized packages necessarily the best value. Buying in smaller quantities may mean a larger outlay of cash for each item, but in the long run it could prove to be a money saver. Fewer stale or spoiled products are thrown away due to over-buying and cooking more than you can eat.

WATER SHED

Earth's total water supply — held in oceans, seas, lakes, rivers, underground water, ice, and clouds is 329,000,000 cubic miles.

The trading stamp industry's total volume of stamps sold dropped from \$860 million in 1966 to \$785 million last year, a decline of 8.8 percent.

District Court Proceedings

Week of Jan. 12-18

In 14th District Court during the week of Jan. 12-18, Helbert Carpenter, Chelsea, was brought in on a bench warrant and sentenced to six months in Washtenaw County Jail on charges of simple larceny and fleeing a police officer.

Bruce Handy, Clinton, was found guilty of violating the basic speed law and ordered to pay \$20 in fines and costs or spend 10 days in jail.

Patricia Byrd, Ypsilanti, pled guilty to failure to maintain equipment, having no operator's license and having no registration or proof of insurance. She was ordered to pay \$86 fines and costs by Jan. 21 or spend 10 days in jail.

James Frpich, Dearborn, pled guilty to speeding 50 mph in a 30 mph zone. He was ordered to pay \$81 fines and costs or spend 10 days in jail.

James Spear, Chelsea, pled guilty to careless driving and was ordered to pay \$68 in fines and costs by Feb. 14.

David Klumpp, Dexter, pled guilty to failure to yield the right of way and was ordered to pay \$20 fines and costs.

Richard Ernst, Ann Arbor, pled guilty to running a stop sign and was ordered to pay \$16 fines and costs.

Carl Jones, Dexter, was found guilty of driving with a suspended license. Sentencing will be Feb. 18.

Frank Armstrong pled guilty to speeding 100 mph in a 70 mph zone and also to not having an operator's license. He was ordered to pay a total of \$119 on both charges.

Charles Greenhal, Auburn Heights, pled guilty to failing to transfer registration and license plates and was ordered to pay \$16 fines and costs.

Carl Schweiger, II, Chelsea, was found guilty of charges of assault and battery. He was sentenced to one year probation and ordered to pay \$75 fines and costs.

Stuart Wath, Jackson, pled guilty to speeding and was ordered to pay \$75 in fines and costs.

Alonzo Feltner, Ypsilanti, pled guilty to driving with a revoked license. Sentencing will be Feb. 29.

Greta Nelson, Ypsilanti, pled guilty to speeding and driving with an expired license and was ordered to pay a total of \$25.

Tommie Gillespie, Whitmore Lake, pled guilty to driving under the influence of liquor and is awaiting sentence.

Douglas Hammond, Saline, was ordered to pay \$150 fines and costs and given six months probation when he was found guilty of impaired driving.

James Fendall, Manchester, was sentenced to one year probation on the alcohol program and was ordered to pay \$150 fines and costs for driving under the influence of liquor.

Pick a Sweetheart OF A PAIR Get a Honey of a PRICE ON MAYTAG!



Choose from a Wide Selection of Models & Features to Suit Your Family Needs and Budget...
SAVE NOW and for Years to Come!

Big family-size tub-Built to handle big loads. Gets large or small loads sparkling clean.

2 Speeds on most models, 3 Temps, 3 Water Levels: Plus Metered Fill, Special Cold Rinse.

Automatic Water Level Control - Lets you adjust water use to size of load. Saves gallons.

Hot, warm or cold wash the right temp for all fabrics, denims to delicates.

Maytag Halo-of-Heat® Dryers: Fast dry clothes in a circle of gentle, low even heat.

Lint Filter. Snaps in. Snaps out. Cleans easily.

Free repair or exchange of defective parts on cabinet if it rusts. Free installation of parts is the responsibility of selling franchise. Maytag dealer within first year; thereafter, installation is extra.

GREAT MAYTAG 5.25 WARRANTY
AUTOMATIC WASHER & DRYER
5 year cabinet warranty against rust. 2 years on complete Washer. 5 years on transmission assembly.

MAYTAG
THE DEPENDABILITY PEOPLE

BIG Family Size MAYTAG Automatic Washers

- Automatic water level control saves water, detergent
- Power Fin Agitator for all size loads
- Permanent Press Cycle
- Lint filter
- Perforated washbasket gets dirt away from clean clothes
- Full Time Safety Lid-action stops in seconds when lid is opened

Perma-Press MAYTAG Halo-of-Heat® Dryers

- No Hot Spots! Gentle, even heat, surrounds clothes
- Permanent Press — keeps wrinkles out, creases in
- Fine mesh lint filter
- Full opening safety door
- Electronic Control — automatically shuts off when proper dryness has been reached (on most models)

stack 'em up . . . store 'em in a closet—they'll fit almost anywhere

MAYTAG PORTA-PAIR™

MAYTAG PORTA-WASHER® portable, quiet. No special installation. Washes a generous load Maytag clean in minutes. 3 settings—Regular, Permanent Press and Delicate.

MAYTAG PORTA-DRYER® needs no installation or venting. Just plug in any adequate 115 volt outlet. Does everything a big dryer does except take up space.

JANUARY CLEARANCE

1 LOT LADIES
WINTER DRESSES & PANT SUITS
1/2 OFF

MEN'S & BOYS'
WINTER JACKETS
1/2 OFF

MEN'S
WINTER WORK JACKETS & LINED COVERALLS
1/3 OFF

SNOWMOBILE SUITS
1/3 OFF

Many, Many Other
Winter Items at
1/3 to 1/2 OFF

1 LOT MEN'S & BOYS'
SLACKS and JEANS
Famous Name Brand
1/3 to 1/2 and More Off

DANCER'S
Chelsea's Friendly Dept. Store

TRUE TEMPER SNOW SHOVEL Aluminum Blade Fire-Hardened® Ash Handle SAVERS SPECIAL \$1.99	
Black & Decker #7510 JIG SAW Make straight, curved or irregular cuts in any type of materials . . . wood, metal or plastic or composition board. 9.99	Black & Decker 1/4" DRILL Best value general-purpose drill. Drills all materials fast, accurately. With accessories will polish, buff, sand, clean. Well balanced. Comfortable grip. 7.99
FULLER SLIP JOINT PLIERS 49¢	Fiberglass Handled HAMMER 16 oz. \$5.59
LUFKIN Folding WOOD RULE \$1.99	ALL PURPOSE UTILITY BOX \$2.99 SPECIAL

FLASHLIGHT BATTERY SPECIAL
No. 950 D Size
NOW **7 for 55¢**

Chelsea PRO Hardware
Your Hardware
110 S. Main Phone 475-1121

HEYDLAUFF'S
113 North Main St., Chelsea Phone 475-1221